

Datasheet for ABIN6747146
anti-MTL5 antibody (AA 51-100)

2 Images

[Go to Product page](#)

Overview

Quantity:	100 µL
Target:	MTL5
Binding Specificity:	AA 51-100
Reactivity:	Human, Dog
Host:	Rabbit
Clonality:	Polyclonal
Conjugate:	This MTL5 antibody is un-conjugated
Application:	Western Blotting (WB), Immunohistochemistry (Paraffin-embedded Sections) (IHC (p)), Immunohistochemistry (IHC)

Product Details

Brand:	IHC-plus™
Immunogen:	Synthetic peptide located between aa51-100 of human MTL5 (Q9Y4I5, NP_004914). Percent identity by BLAST analysis: Human, Chimpanzee, Gorilla (100%), Monkey, Marmoset (92%), Panda (91%), Gibbon (85%), Bat (84%), Dog (83%). Type of Immunogen: Synthetic peptide
Isotype:	IgG
Specificity:	Human MTL5
Predicted Reactivity:	Percent identity by BLAST analysis: Human (100%) Dog (83%).
Purification:	Immunoaffinity purified

Target Details

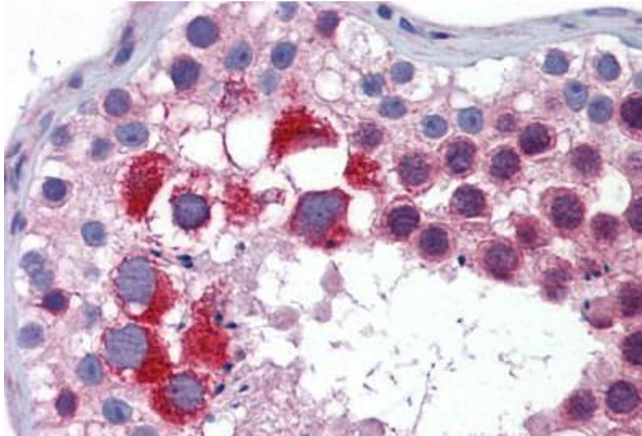
Target:	MTL5
Alternative Name:	MTL5 / TESMIN (MTL5 Products)
Background:	Name/Gene ID: MTL5 Synonyms: MTL5, CXC domain containing 2, CXCDC2, MTLT, Tesmin
Gene ID:	9633
NCBI Accession:	NP_004914
UniProt:	Q9Y4I5

Application Details

Application Notes:	Approved: IHC, IHC-P (5 µg/mL), WB (0.2 - 1 µg/mL) Usage: ELISA titer using peptide based assay: 1:312500. Western Blot: Suggested dilution at 1 µg/mL in 5 % skim milk / PBS buffer, and HRP conjugated anti-Rabbit IgG should be diluted in 1:50000 - 100000 as second antibody.
Comment:	Target Species of Antibody: Human
Restrictions:	For Research Use only

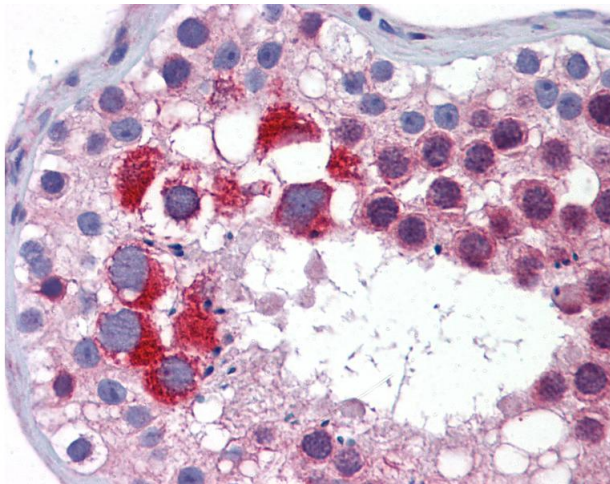
Handling

Format:	Lyophilized
Reconstitution:	Distilled Water.
Concentration:	Lot specific
Buffer:	Lyophilized from PBS with 2 % sucrose
Handling Advice:	Avoid repeat freeze-thaw cycles.
Storage:	4 °C, -20 °C
Storage Comment:	Long term: -20°C, the use of 50% glycerol is recommended if storing aliquots in -20°C for long term use (up to 1 year) Short term (less than 1 week): 4°C. Avoid freeze-thaw cycles.



Immunohistochemistry (Formalin-fixed Paraffin-embedded Sections)

Image 1. Human Testis: Formalin-Fixed, Paraffin-Embedded (FFPE)



Immunohistochemistry

Image 2. Anti-MTL5 antibody IHC of human testis. Immunohistochemistry of formalin-fixed, paraffin-embedded tissue after heat-induced antigen retrieval. Antibody concentration 5 ug/ml. This image was taken for the unconjugated form of this product. Other form ...