

Datasheet for ABIN6747150
anti-ATG16L1 antibody (AA 38-87)



[Go to Product page](#)

2 Images

Overview

Quantity:	100 µL
Target:	ATG16L1
Binding Specificity:	AA 38-87
Reactivity:	Human, Mouse, Rat, Cow, Guinea Pig, Monkey, Chicken
Host:	Rabbit
Clonality:	Polyclonal
Conjugate:	This ATG16L1 antibody is un-conjugated
Application:	Western Blotting (WB), Immunohistochemistry (IHC), Immunohistochemistry (Paraffin-embedded Sections) (IHC (p))

Product Details

Brand:	IHC-plus™
Immunogen:	Synthetic peptide located between aa38-87 of human ATG16L1 (Q676U5, NP_060444). Percent identity by BLAST analysis: Human, Chimpanzee, Gorilla, Orangutan, Monkey, Marmoset, Mouse, Rat, Bovine, Opossum, Guinea pig, Turkey, Chicken (100%), Gibbon, Elephant, Dog, Pig (92%), Lizard (91%), Rabbit, Zebra finch (90%). Type of Immunogen: Synthetic peptide
Isotype:	IgG
Specificity:	Human ATG16L1
Predicted Reactivity:	Percent identity by BLAST analysis: Human, Mouse, Rat, Bovine, Guinea pig, Chicken (100%)

Product Details

Dog, Pig (92%) Rabbit (90%).

Purification: Immunoaffinity purified

Target Details

Target: ATG16L1

Alternative Name: ATG16L1 / ATG16L ([ATG16L1 Products](#))

Background: Name/Gene ID: ATG16L1

Synonyms: ATG16L1, APG16-like 1, APG16L, APG16L beta, ATG16L, Autophagy-related protein 16-1, IBD10, WD repeat domain 30, ATG16A, WDR30

Gene ID: 55054

NCBI Accession: [NP_060444](#)

UniProt: [Q676U5](#)

Pathways: [Autophagy](#)

Application Details

Application Notes: Approved: IHC, IHC-P (5 µg/mL), WB (1 µg/mL)

Usage: ELISA titer using peptide based assay: 1:1562500. Western Blot: Suggested dilution at 1 µg/mL in 5 % skim milk / PBS buffer, and HRP conjugated anti-Rabbit IgG should be diluted in 1:50000 - 100000 as second antibody.

Comment: Target Species of Antibody: Human

Restrictions: For Research Use only

Handling

Format: Lyophilized

Reconstitution: Distilled Water.

Concentration: Lot specific

Buffer: Lyophilized from PBS with 2 % sucrose

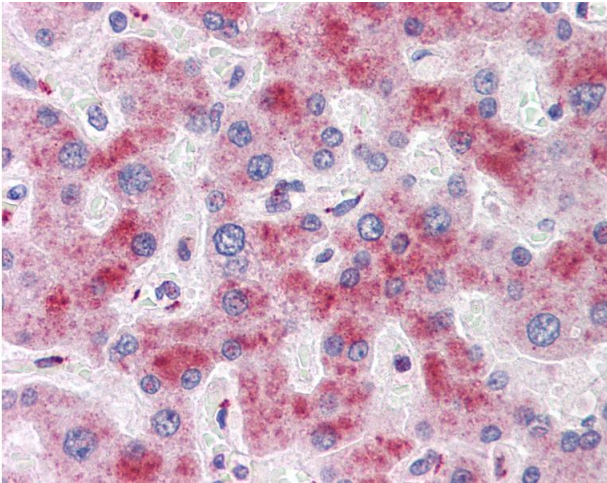
Handling Advice: Avoid repeat freeze-thaw cycles.

Handling

Storage: 4 °C, -20 °C

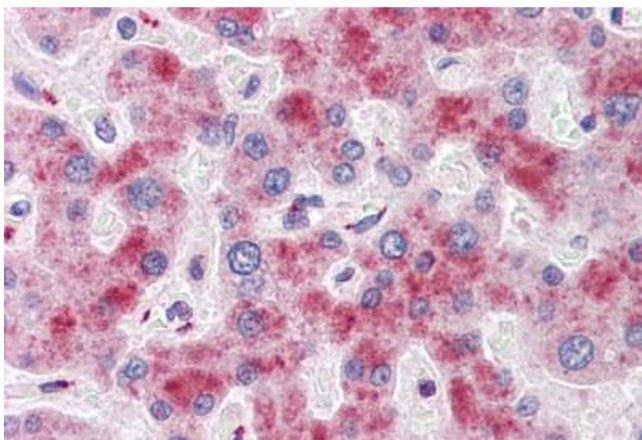
Storage Comment: Long term: -20°C, the use of 50% glycerol is recommended if storing aliquots in -20°C for long term use (up to 1 year)
Short term (less than 1 week): 4°C. Avoid freeze-thaw cycles.

Images



Immunohistochemistry

Image 1. Anti-ATG16L1 antibody IHC of human liver. Immunohistochemistry of formalin-fixed, paraffin-embedded tissue after heat-induced antigen retrieval. Antibody concentration 5 ug/ml. This image was taken for the unconjugated form of this product. Other fo ...



Immunohistochemistry (Formalin-fixed Paraffin-embedded Sections)

Image 2. Human Liver: Formalin-Fixed, Paraffin-Embedded (FFPE)