

Datasheet for ABIN6747154
anti-GCLC antibody (AA 74-123)

2 Images

[Go to Product page](#)

Overview

Quantity:	100 µL
Target:	GCLC
Binding Specificity:	AA 74-123
Reactivity:	Human, Mouse, Rat, Cow, Zebrafish (Danio rerio), Monkey, Rabbit, Dog, Guinea Pig, Pig, Bat, Hamster
Host:	Rabbit
Clonality:	Polyclonal
Conjugate:	This GCLC antibody is un-conjugated
Application:	Western Blotting (WB), Immunohistochemistry (IHC), Immunohistochemistry (Paraffin-embedded Sections) (IHC (p))

Product Details

Brand:	IHC-plus™
Immunogen:	Synthetic peptide located between aa74-123 of human GCLC (Q14TF0, NP_001489). Percent identity by BLAST analysis: Human, Chimpanzee, Gorilla, Monkey, Galago, Marmoset, Mouse, Rat, Hamster, Elephant, Panda, Dog, Bovine, Bat, Rabbit, Pig, Guinea pig (100%), Gibbon, Horse, Lizard (92%), Opossum, Platypus, Salmon (85%). Type of Immunogen: Synthetic peptide
Isotype:	IgG
Specificity:	Human GCLC

Product Details

Predicted Reactivity:	Percent identity by BLAST analysis: Human, Mouse, Dog, Bovine, Rabbit, Pig, Guinea pig (100%) Horse (92%).
-----------------------	---

Purification:	Immunoaffinity purified
---------------	-------------------------

Target Details

Target:	GCLC
---------	------

Alternative Name:	GCLC (GCLC Products)
-------------------	--

Background:	Name/Gene ID: GCLC
-------------	--------------------

Synonyms: GCLC, GCL, GCS heavy chain, Gamma-ECS, GCS, GLCL, GLCLC

Gene ID:	2729
----------	------

NCBI Accession:	NP_001489
-----------------	---------------------------

UniProt:	P48506
----------	------------------------

Pathways:	Cell RedoxHomeostasis
-----------	---------------------------------------

Application Details

Application Notes:	Approved: IHC, IHC-P (5 µg/mL), WB (0.2 - 1 µg/mL)
--------------------	--

Usage: ELISA titer using peptide based assay: 1:1562500. Western Blot: Suggested dilution at 1 µg/mL in 5 % skim milk / PBS buffer, and HRP conjugated anti-Rabbit IgG should be diluted in 1:50000 - 100000 as second antibody.

Comment:	Target Species of Antibody: Human
----------	-----------------------------------

Restrictions:	For Research Use only
---------------	-----------------------

Handling

Format:	Lyophilized
---------	-------------

Reconstitution:	Distilled Water.
-----------------	------------------

Concentration:	Lot specific
----------------	--------------

Buffer:	Lyophilized from PBS with 2 % sucrose
---------	---------------------------------------

Handling Advice:	Avoid repeat freeze-thaw cycles.
------------------	----------------------------------

Handling

Storage: 4 °C, -20 °C

Storage Comment: Long term: -20°C, the use of 50% glycerol is recommended if storing aliquots in -20°C for long term use (up to 1 year)
Short term (less than 1 week): 4°C. Avoid freeze-thaw cycles.

Images

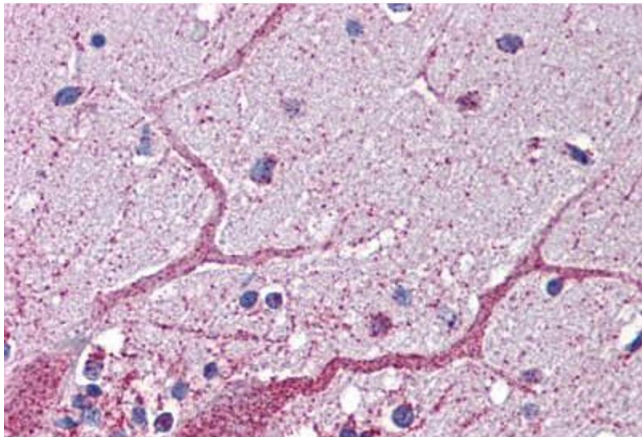
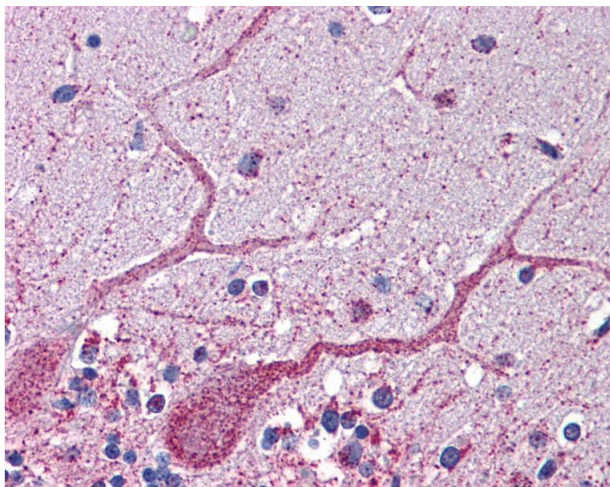


Image 1. Human Brain, Cerebellum



Immunohistochemistry

Image 2. Anti-GCLC antibody IHC of human brain-cerebellum. Immunohistochemistry of formalin-fixed, paraffin-embedded tissue after heat-induced antigen retrieval. Antibody concentration 5 ug/ml. This image was taken for the unconjugated form of this product. ...