



[Go to Product page](#)

Datasheet for ABIN6747158
anti-GCLM antibody (AA 182-231)

2 Images

Overview

Quantity:	100 µL
Target:	GCLM
Binding Specificity:	AA 182-231
Reactivity:	Human, Mouse, Rat, Cow, Monkey, Dog, Guinea Pig, Horse, Rabbit, Zebrafish (Danio rerio), Pig, Bat
Host:	Rabbit
Clonality:	Polyclonal
Conjugate:	This GCLM antibody is un-conjugated
Application:	Western Blotting (WB), Immunohistochemistry (IHC), Immunohistochemistry (Paraffin-embedded Sections) (IHC (p))

Product Details

Brand:	IHC-plus™
Immunogen:	Synthetic peptide located between aa182-231 of human GCLM (P48507, NP_002052). Percent identity by BLAST analysis: Human, Chimpanzee, Gorilla, Gibbon, Monkey, Galago, Marmoset, Mouse, Rat, Elephant, Dog, Bovine, Bat, Rabbit, Horse, Pig, Guinea pig (100%), Opossum, Turkey, Zebra finch, Chicken (92%), Xenopus (85%), Lizard (84%). Type of Immunogen: Synthetic peptide
Isotype:	IgG
Specificity:	Human GCLM

Product Details

Predicted Reactivity:	Percent identity by BLAST analysis: Human, Mouse, Rat, Dog, Rabbit, Horse, Guinea pig (100%) Chicken (92%) Xenopus (85%).
Purification:	Immunoaffinity purified

Target Details

Target:	GCLM
Alternative Name:	GCLM (GCLM Products)
Background:	Name/Gene ID: GCLM Synonyms: GCLM, Gamma-ECS regulatory subunit, GLCLR, GCS light chain, GSC light chain
Gene ID:	2730
NCBI Accession:	NP_002052
UniProt:	P48507

Application Details

Application Notes:	Approved: IHC, IHC-P (5 µg/mL), WB (0.2 - 1 µg/mL) Usage: ELISA titer using peptide based assay: 1:312500. Western Blot: Suggested dilution at 1 µg/mL in 5 % skim milk / PBS buffer, and HRP conjugated anti-Rabbit IgG should be diluted in 1:50000 - 100000 as second antibody.
Comment:	Target Species of Antibody: Human
Restrictions:	For Research Use only

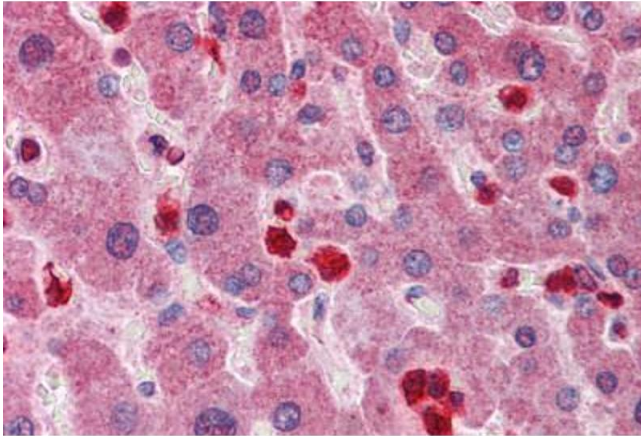
Handling

Format:	Lyophilized
Reconstitution:	Distilled Water.
Concentration:	Lot specific
Buffer:	Lyophilized from PBS with 2 % sucrose
Handling Advice:	Avoid repeat freeze-thaw cycles.
Storage:	4 °C,-20 °C

Handling

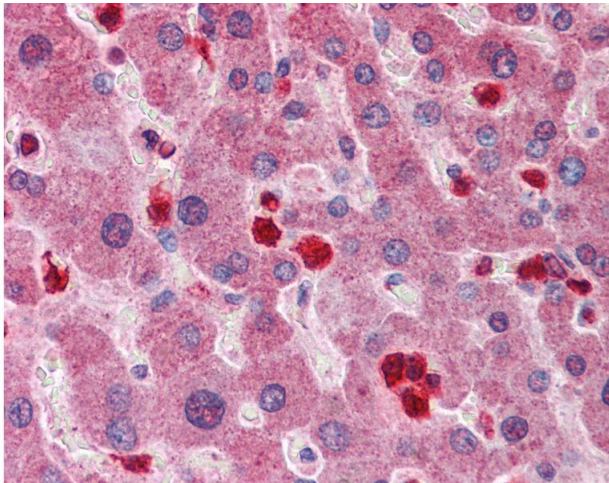
Storage Comment: Long term: -20°C, the use of 50% glycerol is recommended if storing aliquots in -20°C for long term use (up to 1 year)
Short term (less than 1 week): 4°C. Avoid freeze-thaw cycles.

Images



Immunohistochemistry (Formalin-fixed Paraffin-embedded Sections)

Image 1. Human Liver: Formalin-Fixed, Paraffin-Embedded (FFPE)



Immunohistochemistry

Image 2. Anti-GCLM antibody IHC of human liver. Immunohistochemistry of formalin-fixed, paraffin-embedded tissue after heat-induced antigen retrieval. Antibody concentration 5 ug/ml. This image was taken for the unconjugated form of this product. Other forms ...