



[Go to Product page](#)

Datasheet for ABIN6747161
anti-FKBP5 antibody (AA 326-375)

2 Images

Overview

Quantity:	100 µL
Target:	FKBP5
Binding Specificity:	AA 326-375
Reactivity:	Human, Mouse, Rat, Dog, Rabbit, Hamster, Cow, Horse, Guinea Pig, Pig, Zebrafish (Danio rerio), Bat, Chicken, Monkey
Host:	Rabbit
Clonality:	Polyclonal
Conjugate:	This FKBP5 antibody is un-conjugated
Application:	Western Blotting (WB), Immunohistochemistry (IHC), Immunohistochemistry (Paraffin-embedded Sections) (IHC (p))

Product Details

Brand:	IHC-plus™
Immunogen:	Synthetic peptide located between aa326-375 of human FKBP5 (Q13451, NP_004108). Percent identity by BLAST analysis: Human, Chimpanzee, Gorilla, Gibbon, Monkey, Galago, Marmoset, Tamarin, Mouse, Rat, Hamster, Elephant, Panda, Dog, Bovine, Bat, Rabbit, Horse, Pig, Guinea pig, Turkey, Zebra finch, Chicken (100%), Orangutan, Opossum (92%), Xenopus (90%), Platypus (85%). Type of Immunogen: Synthetic peptide
Isotype:	IgG

Product Details

Specificity: Human FKBP5 / FKBP51

Predicted Reactivity: Percent identity by BLAST analysis: Human, Mouse, Rat, Dog, Bovine, Rabbit, Horse, Pig, Chicken (100%).

Purification: Immunoaffinity purified

Target Details

Target: FKBP5

Alternative Name: FKBP5 / FKBP51 ([FKBP5 Products](#))

Background: Name/Gene ID: FKBP5

Synonyms: FKBP5, 51 kd fk506-binding protein, 51 kDa FK506-binding protein, 51 kDa FK506-binding protein 5, 51 kDa FKBP, AIG6, Androgen-regulated protein 6, FKBP-51, FKBP-5, FKBP51, FF1 antigen, FK506 binding protein 5, p54, Ptg-10, Rotamase, T-cell FK506-binding protein, PPIase, PPIase FKBP5, FK506-binding protein 5, FKBP54, HSP90-binding immunophilin

Gene ID: 2289

NCBI Accession: [NP_004108](#)

UniProt: [Q13451](#)

Application Details

Application Notes: Approved: IHC, IHC-P (2.5 µg/mL), WB (0.2 - 1 µg/mL)

Usage: ELISA titer using peptide based assay: 1:312500. Western Blot: Suggested dilution at 1 µg/mL in 5 % skim milk / PBS buffer, and HRP conjugated anti-Rabbit IgG should be diluted in 1:50000 - 100000 as second antibody.

Comment: Target Species of Antibody: Human

Restrictions: For Research Use only

Handling

Format: Lyophilized

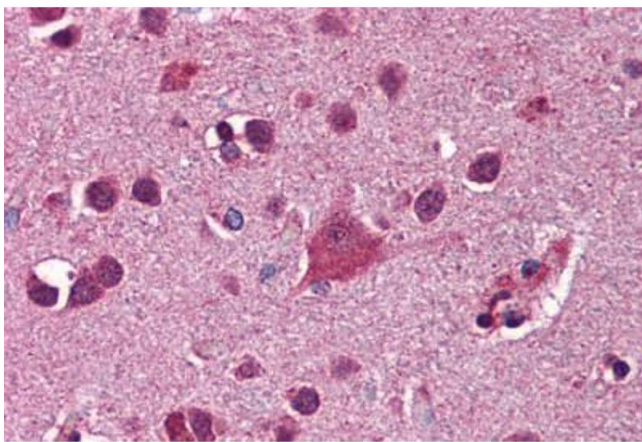
Reconstitution: Distilled Water.

Concentration: Lot specific

Handling

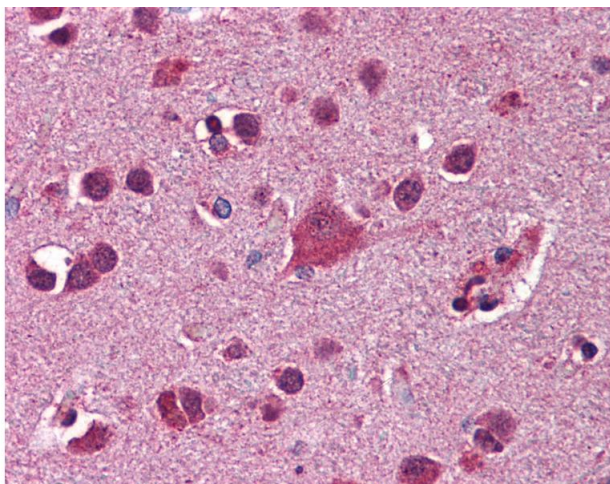
Buffer:	Lyophilized from PBS with 2 % sucrose
Handling Advice:	Avoid repeat freeze-thaw cycles.
Storage:	4 °C, -20 °C
Storage Comment:	Long term: -20°C, the use of 50% glycerol is recommended if storing aliquots in -20°C for long term use (up to 1 year) Short term (less than 1 week): 4°C. Avoid freeze-thaw cycles.

Images



Immunohistochemistry (Formalin-fixed Paraffin-embedded Sections)

Image 1. Human Brain, Cortex: Formalin-Fixed, Paraffin-Embedded (FFPE)



Immunohistochemistry

Image 2. Anti-FKBP5 antibody IHC of human brain, cortex. Immunohistochemistry of formalin-fixed, paraffin-embedded tissue after heat-induced antigen retrieval. Antibody concentration 2.5 ug/ml. This image was taken for the unconjugated form of this product. ...