

Datasheet for ABIN6747164

anti-Lactate Dehydrogenase A antibody (N-Term)



[Go to Product page](#)

2 Images

Overview

Quantity:	100 µL
Target:	Lactate Dehydrogenase A (LDHA)
Binding Specificity:	N-Term
Reactivity:	Human, Pig, Rabbit, Cow, Horse, Monkey, Hamster
Host:	Rabbit
Clonality:	Polyclonal
Conjugate:	This Lactate Dehydrogenase A antibody is un-conjugated
Application:	Western Blotting (WB), Immunohistochemistry (IHC), Immunohistochemistry (Paraffin-embedded Sections) (IHC (p))

Product Details

Brand:	IHC-plus™
Immunogen:	Synthetic peptide from N-Terminus of human LDHA (P00338, NP_005557). Percent identity by BLAST analysis: Human, Chimpanzee, Gorilla, Orangutan, Gibbon, Monkey, Marmoset, Hamster (100%), Galago, Mouse, Rat, Guinea pig (92%), Ferret, Dolphin, Bovine, Rabbit, Horse, Opossum, Platypus (85%). Type of Immunogen: Synthetic peptide
Isotype:	IgG
Specificity:	Human LDHA
Predicted Reactivity:	Percent identity by BLAST analysis: Human (100%) Mouse, Rat, Guinea pig (92%) Bovine,

Product Details

	Rabbit, Horse (85%).
Purification:	Immunoaffinity purified

Target Details

Target:	Lactate Dehydrogenase A (LDHA)
Alternative Name:	LDHA / LDH1 (LDHA Products)
Background:	Name/Gene ID: LDHA Synonyms: LDHA, LDH muscle subunit, LDH1, Lactate dehydrogenase M, LDH-M, GSD11, Lactate dehydrogenase A, LDH-A, LDHM, PIG19, Proliferation-inducing gene 19
Gene ID:	3939
NCBI Accession:	NP_005557
UniProt:	P00338
Pathways:	Warburg Effect

Application Details

Application Notes:	Approved: IHC, IHC-P (2.5 µg/mL), WB (0.2 - 1 µg/mL) Usage: Western Blot: Suggested dilution at 1 µg/mL in 5 % skim milk / PBS buffer, and HRP conjugated anti-Rabbit IgG should be diluted in 1: 50,000 - 100,000 as second antibody. ELISA titer in peptide based assay: 1:62500.
Comment:	Target Species of Antibody: Human
Restrictions:	For Research Use only

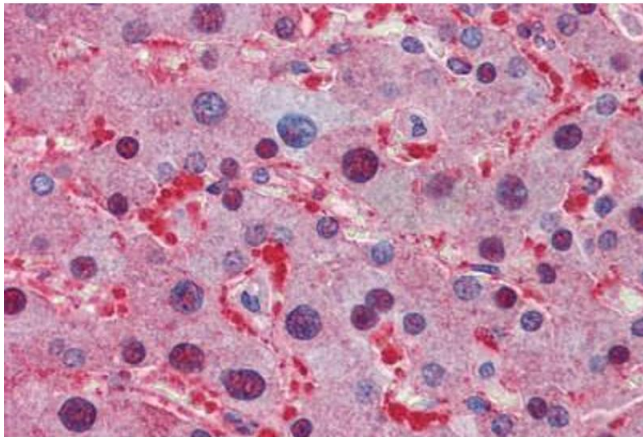
Handling

Format:	Lyophilized
Reconstitution:	Distilled water
Concentration:	Lot specific
Buffer:	Lyophilized from PBS with 2 % sucrose
Handling Advice:	Avoid repeat freeze-thaw cycles.

Handling

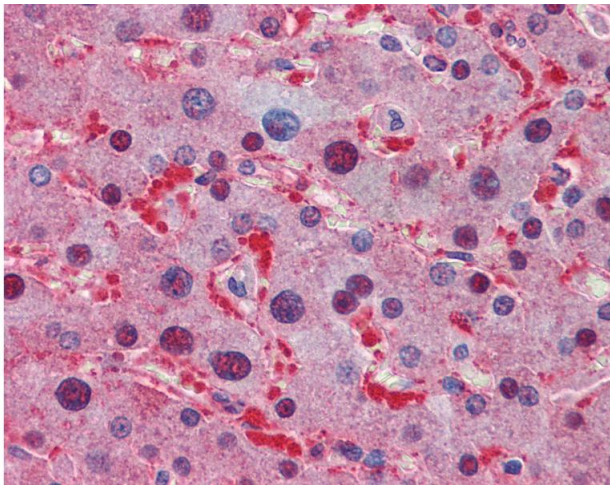
Storage:	4 °C,-20 °C
Storage Comment:	Long term: -20°C, the use of 50% glycerol is recommended if storing aliquots in -20°C for long term use (up to 1 year) Short term (less than 1 week): 4°C. Avoid freeze-thaw cycles.

Images



Immunohistochemistry (Formalin-fixed Paraffin-embedded Sections)

Image 1. Human Liver: Formalin-Fixed, Paraffin-Embedded (FFPE)



Immunohistochemistry

Image 2. Anti-LDHA antibody IHC of human liver. Immunohistochemistry of formalin-fixed, paraffin-embedded tissue after heat-induced antigen retrieval. Antibody concentration 2.5 ug/ml. This image was taken for the unconjugated form of this product. Other for ...