



Datasheet for ABIN6747166
anti-APPL1 antibody (AA 467-516)



[Go to Product page](#)

2 Images

Overview

Quantity:	100 µL
Target:	APPL1
Binding Specificity:	AA 467-516
Reactivity:	Human, Mouse, Rat, Cow, Guinea Pig, Monkey, Pig
Host:	Rabbit
Clonality:	Polyclonal
Application:	Western Blotting (WB), Immunohistochemistry (IHC), Immunohistochemistry (Paraffin-embedded Sections) (IHC (p))

Product Details

Brand:	IHC-plus™
Immunogen:	Synthetic peptide located between aa467-516 of human APPL1 (Q9UKG1, NP_036228). Percent identity by BLAST analysis: Human, Chimpanzee, Gorilla, Gibbon, Galago, Marmoset, Mouse, Rat, Guinea pig (100%), Elephant, Dog, Bat, Horse, Lizard (92%), Bovine, Pig, Turkey, Chicken (85%). Type of Immunogen: Synthetic peptide
Isotype:	IgG
Specificity:	Human APPL1
Predicted Reactivity:	Percent identity by BLAST analysis: Rat, Guinea pig (100%) Dog, Horse (92%) Bovine, Pig, Chicken (85%).

Product Details

Purification: Immunoaffinity purified

Target Details

Target: APPL1

Alternative Name: APPL1 / APPL ([APPL1 Products](#))

Background: Name/Gene ID: APPL1

Synonyms: APPL1, Dip13-alpha, DIP13A, DIP13alpha, AKT2 interactor, KIAA1428, APPL

Gene ID: 26060

NCBI Accession: [NP_036228](#)

UniProt: [Q9UKG1](#)

Application Details

Application Notes: Approved: IHC, IHC-P (5 µg/mL), WB (0.2 - 1 µg/mL)

Usage: Western Blot: Suggested dilution at 1 µg/mL in 5 % skim milk / PBS buffer, and HRP conjugated anti-Rabbit IgG should be diluted in 1: 50,000 - 100,000 as second antibody. ELISA titer in peptide based assay: 1:62500.

Comment: Target Species of Antibody: Human

Restrictions: For Research Use only

Handling

Format: Lyophilized

Reconstitution: Distilled water

Concentration: Lot specific

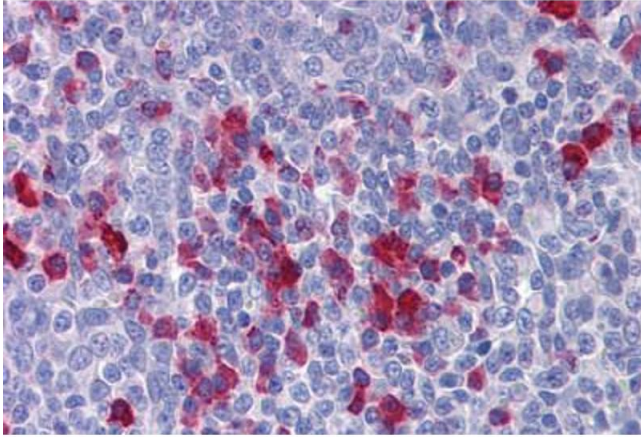
Buffer: Lyophilized from PBS with 2 % sucrose

Handling Advice: Avoid repeat freeze-thaw cycles.

Storage: 4 °C, -20 °C

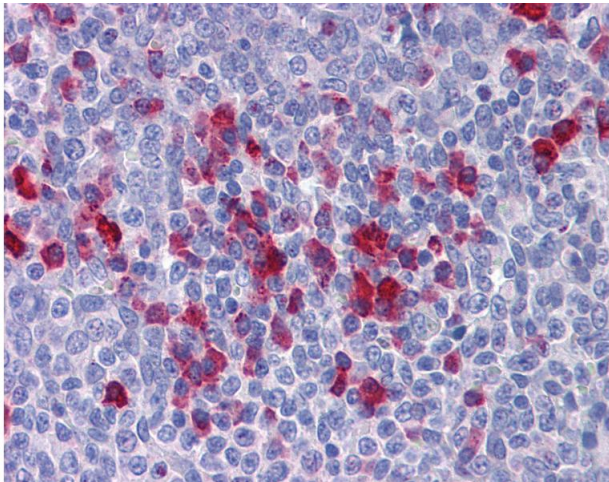
Storage Comment: Long term: -20°C, the use of 50% glycerol is recommended if storing aliquots in -20°C for long term use (up to 1 year)

Short term (less than 1 week): 4°C. Avoid freeze-thaw cycles.



Immunohistochemistry (Formalin-fixed Paraffin-embedded Sections)

Image 1. Human Tonsil: Formalin-Fixed, Paraffin-Embedded (FFPE)



Immunohistochemistry

Image 2. Anti-APPL1 antibody IHC of human tonsil. Immunohistochemistry of formalin-fixed, paraffin-embedded tissue after heat-induced antigen retrieval. Antibody concentration 5 ug/ml. This image was taken for the unconjugated form of this product. Other for ...