



[Go to Product page](#)

Datasheet for ABIN6747168  
**anti-DDAH1 antibody (AA 108-157)**

2 Images

Overview

Quantity:	100 µL
Target:	DDAH1
Binding Specificity:	AA 108-157
Reactivity:	Human, Mouse, Rat, Cow, Guinea Pig, Horse, Rabbit, Dog, Zebrafish (Danio rerio), Monkey, Bat, Chicken, Pig, Xenopus laevis
Host:	Rabbit
Clonality:	Polyclonal
Conjugate:	This DDAH1 antibody is un-conjugated
Application:	Western Blotting (WB), Immunohistochemistry (IHC), Immunohistochemistry (Paraffin-embedded Sections) (IHC (p))

Product Details

Brand:	IHC-plus™
Immunogen:	Synthetic peptide located between aa108-157 of human DDAH1 (O94760, NP_036269). Percent identity by BLAST analysis: Human, Chimpanzee, Gorilla, Gibbon, Monkey, Galago, Marmoset, Mouse, Rat, Elephant, Dog, Bovine, Bat, Rabbit, Horse, Pig, Opossum, Guinea pig, Turkey, Zebra finch, Chicken, Platypus, Xenopus, Stickleback, Zebrafish (100%), Panda (84%).  Type of Immunogen: Synthetic peptide
Isotype:	IgG
Specificity:	Human DDAH1

## Product Details

---

Predicted Reactivity:	Percent identity by BLAST analysis: Human, Mouse, Rat, Dog, Bovine, Rabbit, Horse, Pig, Guinea pig, Chicken, Xenopus (100%).
Purification:	Immunoaffinity purified

## Target Details

---

Target:	DDAH1
Alternative Name:	DDAH / DDAH1 ( <a href="#">DDAH1 Products</a> )
Background:	Name/Gene ID: DDAH1  Synonyms: DDAH1, DDAH, DDAH-1, DDAHI, Dimethylargininase-1
Gene ID:	23576
NCBI Accession:	<a href="#">NP_036269</a>
UniProt:	<a href="#">O94760</a>

## Application Details

---

Application Notes:	Approved: IHC, IHC-P (2.5 µg/mL), WB (0.2 - 1 µg/mL)  Usage: Western Blot: Suggested dilution at 1 µg/mL in 5 % skim milk / PBS buffer, and HRP conjugated anti-Rabbit IgG should be diluted in 1: 50,000 - 100,000 as second antibody. ELISA titer in peptide based assay: 1:12500.
Comment:	Target Species of Antibody: Human
Restrictions:	For Research Use only

## Handling

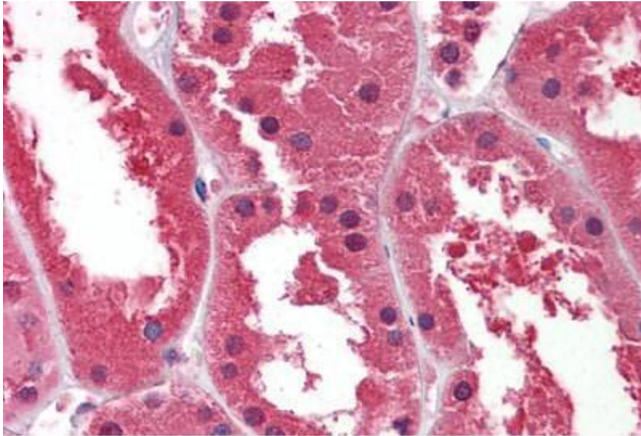
---

Format:	Lyophilized
Reconstitution:	Distilled water
Concentration:	Lot specific
Buffer:	Lyophilized from PBS with 2 % sucrose
Handling Advice:	Avoid repeat freeze-thaw cycles.
Storage:	4 °C,-20 °C

## Handling

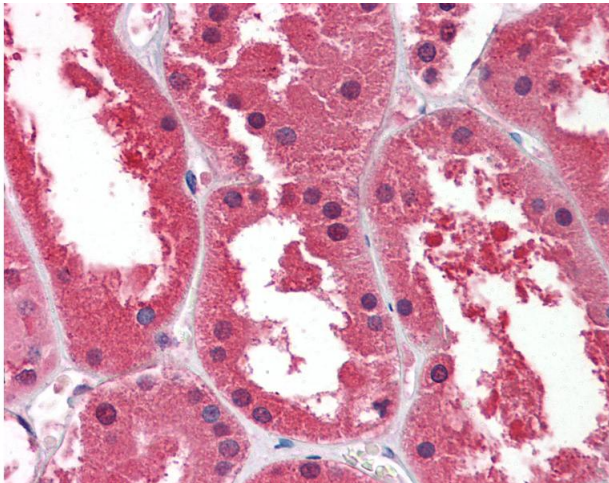
Storage Comment: Long term: -20°C, the use of 50% glycerol is recommended if storing aliquots in -20°C for long term use (up to 1 year)  
Short term (less than 1 week): 4°C. Avoid freeze-thaw cycles.

## Images



### Immunohistochemistry (Formalin-fixed Paraffin-embedded Sections)

**Image 1.** Human Kidney: Formalin-Fixed, Paraffin-Embedded (FFPE)



### Immunohistochemistry

**Image 2.** Anti-DDAH1 antibody IHC of human kidney. Immunohistochemistry of formalin-fixed, paraffin-embedded tissue after heat-induced antigen retrieval. Antibody concentration 2.5 ug/ml. This image was taken for the unconjugated form of this product. Other f ...