

Datasheet for ABIN6747173
anti-SH2B1 antibody (AA 395-444)[Go to Product page](#)

2 Images

Overview

Quantity:	100 µL
Target:	SH2B1
Binding Specificity:	AA 395-444
Reactivity:	Human, Mouse, Rat, Dog, Guinea Pig, Horse, Rabbit, Bat, Monkey
Host:	Rabbit
Clonality:	Polyclonal
Conjugate:	This SH2B1 antibody is un-conjugated
Application:	Western Blotting (WB), Immunohistochemistry (IHC), Immunohistochemistry (Paraffin-embedded Sections) (IHC (p))

Product Details

Brand:	IHC-plus™
Immunogen:	<p>Synthetic peptide located between aa395-444 of human SH2B1 (Q9NRF2-2, NP_056318).</p> <p>Percent identity by BLAST analysis: Human, Chimpanzee, Gorilla, Gibbon, Galago, Marmoset, Mouse, Rat, Dog, Bat, Horse, Guinea pig (100%), Elephant, Panda, Bovine, Pig (92%), Rabbit, Opossum (85%).</p> <p>Type of Immunogen: Synthetic peptide</p>
Specificity:	Human SH2B1
Predicted Reactivity:	Percent identity by BLAST analysis: Human, Mouse, Rat, Dog, Horse, Guinea pig (100%) Bovine, Pig (92%) Rabbit (85%).

Product Details

Purification: Immunoaffinity purified

Target Details

Target: SH2B1

Alternative Name: SH2B1 ([SH2B1 Products](#))

Background: Name/Gene ID: SH2B1

Synonyms: SH2B1, KIAA1299, PSM, SH2B adapter protein 1, SH2-B signaling protein, SH2B, SH2B adaptor protein 1

Gene ID: 25970

NCBI Accession: [NP_056318](#)

UniProt: [Q9NRF2](#)

Application Details

Application Notes: Approved: IHC, IHC-P (5 µg/mL), WB (0.2 - 1 µg/mL)

Usage: Western Blot: Suggested dilution at 1 µg/mL in 5 % skim milk / PBS buffer, and HRP conjugated anti-Rabbit IgG should be diluted in 1: 50,000 - 100,000 as secondary antibody.

Comment: Target Species of Antibody: Human

Restrictions: For Research Use only

Handling

Format: Lyophilized

Reconstitution: Reconstitute with 50 µL sterile ddH₂O.

Concentration: Lot specific

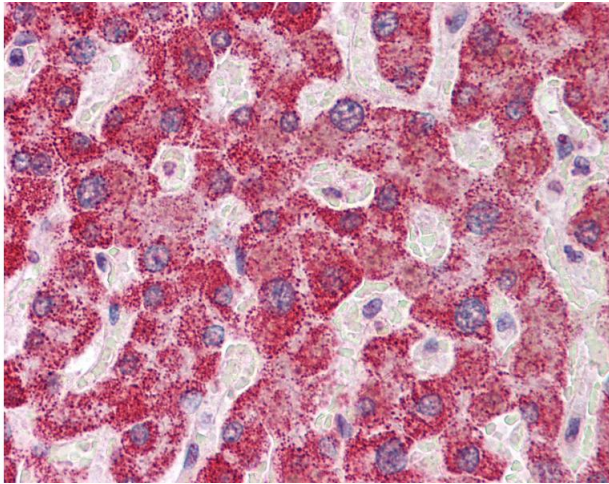
Buffer: Lyophilized from PBS with 2 % sucrose

Handling Advice: Avoid repeat freeze-thaw cycles.

Storage: 4 °C, -20 °C

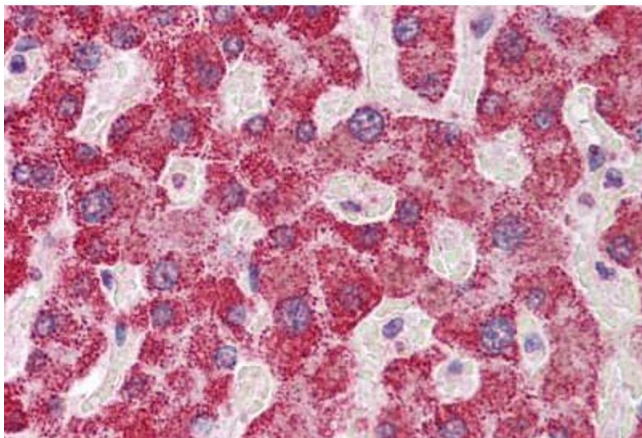
Storage Comment: Long term: -20°C, the use of 50% glycerol is recommended if storing aliquots in -20°C for long term use (up to 1 year)

Short term (less than 1 week): 4°C. Avoid freeze-thaw cycles.



Immunohistochemistry

Image 1. Anti-SH2B1 antibody IHC of human liver. Immunohistochemistry of formalin-fixed, paraffin-embedded tissue after heat-induced antigen retrieval. Antibody concentration 5 ug/ml. This image was taken for the unconjugated form of this product. Other form ...



Immunohistochemistry (Formalin-fixed Paraffin-embedded Sections)

Image 2. Human Liver: Formalin-Fixed, Paraffin-Embedded (FFPE)