

Datasheet for ABIN6747175
anti-ALKBH3 antibody (AA 216-265)



[Go to Product page](#)

2 Images

Overview

Quantity:	100 µL
Target:	ALKBH3
Binding Specificity:	AA 216-265
Reactivity:	Human, Mouse, Rat, Horse, Rabbit, Bat, Monkey
Host:	Rabbit
Clonality:	Polyclonal
Conjugate:	This ALKBH3 antibody is un-conjugated
Application:	Western Blotting (WB), Immunohistochemistry (IHC), Immunohistochemistry (Paraffin-embedded Sections) (IHC (p))

Product Details

Brand:	IHC-plus™
Immunogen:	Synthetic peptide located between aa216-265 of human ALKBH3 (Q96Q83, NP_631917). Percent identity by BLAST analysis: Human, Chimpanzee, Gorilla, Gibbon, Monkey, Galago, Marmoset, Mouse, Rat, Elephant, Bat, Horse, Smelt (100%), Dog, Bovine, Guinea pig, Chicken, Platypus, Xenopus, Stickleback (92%), Rabbit, Turkey, Catfish (85%). Type of Immunogen: Synthetic peptide
Isotype:	IgG
Specificity:	Human ALKBH3
Predicted Reactivity:	Percent identity by BLAST analysis: Human, Mouse, Horse (100%) Dog, Guinea pig, Chicken,

Product Details

Xenopus (92%) Rabbit (85%).

Purification: Immunoaffinity purified

Target Details

Target: ALKBH3

Alternative Name: PCA1 / ALKBH3 ([ALKBH3 Products](#))

Background: Name/Gene ID: ALKBH3

Synonyms: ALKBH3, ABH3, DEPC1, DEPC-1, Prostate cancer antigen 1, PCA1, Prostate cancer antigen-1

Gene ID: 221120

NCBI Accession: [NP_631917](#)

UniProt: [Q96Q83](#)

Pathways: [DNA Damage Repair](#)

Application Details

Application Notes: Approved: IHC, IHC-P (5 µg/mL), WB (0.2 - 1 µg/mL)

Usage: Western Blot: Suggested dilution at 1 µg/mL in 5 % skim milk / PBS buffer, and HRP conjugated anti-Rabbit IgG should be diluted in 1: 50,000 - 100,000 as second antibody. ELISA titer in peptide based assay: 1:1562500.

Comment: Target Species of Antibody: Human

Restrictions: For Research Use only

Handling

Format: Lyophilized

Reconstitution: Distilled water

Concentration: Lot specific

Buffer: Lyophilized from PBS with 2 % sucrose

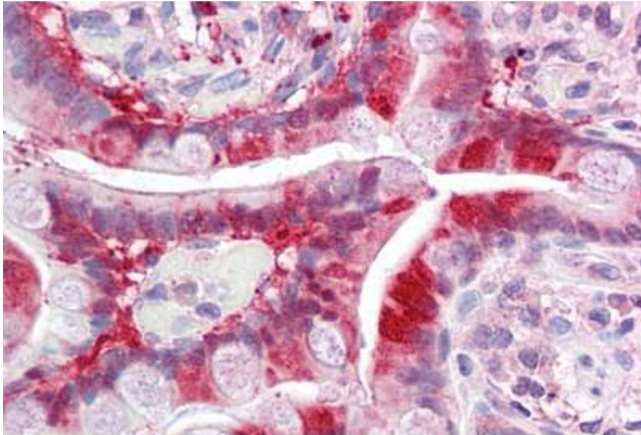
Handling Advice: Avoid repeat freeze-thaw cycles.

Handling

Storage: 4 °C, -20 °C

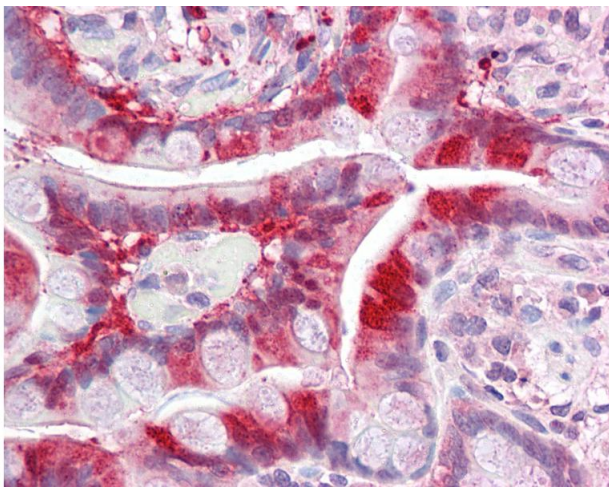
Storage Comment: Long term: -20°C, the use of 50% glycerol is recommended if storing aliquots in -20°C for long term use (up to 1 year)
Short term (less than 1 week): 4°C. Avoid freeze-thaw cycles.

Images



Immunohistochemistry

Image 1. Anti-ALKBH3 antibody IHC staining of human small intestine. Immunohistochemistry of formalin-fixed, paraffin-embedded tissue after heat-induced antigen retrieval. Antibody ABIN1099943 concentration 5 ug/ml.



Immunohistochemistry

Image 2. Anti-ALKBH3 antibody IHC of human small intestine. Immunohistochemistry of formalin-fixed, paraffin-embedded tissue after heat-induced antigen retrieval. Antibody concentration 5 ug/ml. This image was taken for the unconjugated form of this product. ...