

Datasheet for ABIN6747176  
**anti-EPHX4 antibody (AA 71-120)**

## 2 Images

[Go to Product page](#)

## Overview

Quantity:	100 µL
Target:	EPHX4
Binding Specificity:	AA 71-120
Reactivity:	Human, Mouse, Rat, Cow, Dog, Guinea Pig, Rabbit, Chicken, Monkey, Xenopus laevis
Host:	Rabbit
Clonality:	Polyclonal
Conjugate:	This EPHX4 antibody is un-conjugated
Application:	Western Blotting (WB), Immunohistochemistry (IHC), Immunohistochemistry (Paraffin-embedded Sections) (IHC (p))

## Product Details

Brand:	IHC-plus™
Immunogen:	Synthetic peptide located between aa71-120 of human EPHX4 (Q8IUS5, NP_775838). Percent identity by BLAST analysis: Human, Chimpanzee, Gorilla, Gibbon, Monkey, Galago, Marmoset, Mouse, Rat, Elephant, Panda, Dog, Bovine, Rabbit, Opossum, Guinea pig, Turkey, Zebra finch, Chicken, Xenopus (100%), Bat, Stickleback, Zebrafish (92%).  Type of Immunogen: Synthetic peptide
Specificity:	Human EPHX4
Predicted Reactivity:	Percent identity by BLAST analysis: Human, Mouse, Rat, Bovine, Chicken (100%) Pufferfish (92%).

## Product Details

Purification: Immunoaffinity purified

## Target Details

Target: EPHX4

Alternative Name: EPHX4 / Epoxide Hydrolase 4 ([EPHX4 Products](#))

Background: Name/Gene ID: EPHX4

Synonyms: EPHX4, EPHXRP, ABHD7, Epoxide hydrolase 4

Gene ID: 253152

NCBI Accession: [NP\\_775838](#)

UniProt: [Q8IUS5](#)

## Application Details

Application Notes: Approved: IHC, IHC-P (5 µg/mL), WB (0.2 - 1 µg/mL)

Usage: Western Blot: Suggested dilution at 1 µg/mL in 5 % skim milk / PBS buffer, and HRP conjugated anti-Rabbit IgG should be diluted in 1: 50,000 - 100,000 as secondary antibody.

Comment: Target Species of Antibody: Human

Restrictions: For Research Use only

## Handling

Format: Lyophilized

Reconstitution: Distilled water

Concentration: Lot specific

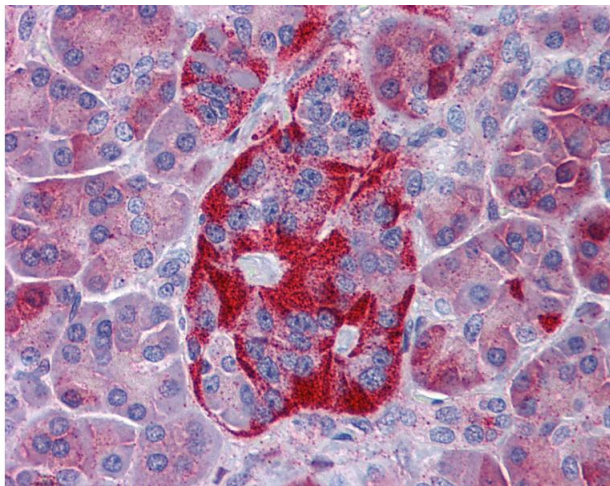
Buffer: Lyophilized from PBS with 2 % sucrose

Handling Advice: Avoid repeat freeze-thaw cycles.

Storage: 4 °C, -20 °C

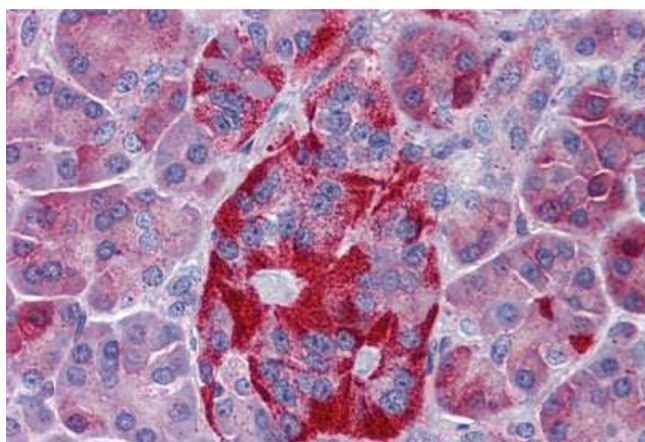
Storage Comment: Long term: -20°C, the use of 50% glycerol is recommended if storing aliquots in -20°C for long term use (up to 1 year)

Short term (less than 1 week): 4°C. Avoid freeze-thaw cycles.



#### Immunohistochemistry

**Image 1.** Anti-EPHX4 antibody IHC of human pancreas. Immunohistochemistry of formalin-fixed, paraffin-embedded tissue after heat-induced antigen retrieval. Antibody concentration 5 ug/ml. This image was taken for the unconjugated form of this product. Other f ...



#### Immunohistochemistry (Formalin-fixed Paraffin-embedded Sections)

**Image 2.** Human Pancreas: Formalin-Fixed, Paraffin-Embedded (FFPE)