



[Go to Product page](#)

Datasheet for ABIN6747178
anti-RPL5 antibody (AA 35-84)

2 Images

Overview

Quantity:	100 µL
Target:	RPL5
Binding Specificity:	AA 35-84
Reactivity:	Human, Rat, Mouse, Zebrafish (Danio rerio), Dog, Guinea Pig, Horse, Rabbit, Cow, Chicken, Monkey, Drosophila melanogaster, Hamster, Pig, Xenopus laevis, Insect
Host:	Rabbit
Clonality:	Polyclonal
Conjugate:	This RPL5 antibody is un-conjugated
Application:	Western Blotting (WB), Immunohistochemistry (IHC), Immunohistochemistry (Paraffin-embedded Sections) (IHC (p))

Product Details

Brand:	IHC-plus™
Immunogen:	Synthetic peptide located between aa35-84 of human RPL5 (P46777, NP_000960). Percent identity by BLAST analysis: Human, Chimpanzee, Gorilla, Gibbon, Monkey, Galago, Marmoset, Mouse, Rat, Hamster, Panda, Dog, Bovine, Rabbit, Horse, Pig, Opossum, Guinea pig, Turkey, Zebra finch, Chicken, Platypus, Xenopus, Trout, Catfish, Salmon, Smelt, Zebrafish, Drosophila, Mosquito, Rice, Grape, Arabidopsis (100%), Sablefish, Nematode, Tunicate (92%), Sea squirt (85%). Type of Immunogen: Synthetic peptide
Specificity:	Human RPL5

Product Details

Predicted Reactivity:	Percent identity by BLAST analysis: Human, Mouse, Dog, Horse, Pig, Guinea pig, Chicken, Xenopus, Zebrafish (100%).
Purification:	Immunoaffinity purified

Target Details

Target:	RPL5
Alternative Name:	RPL5 / L5 (RPL5 Products)
Background:	Name/Gene ID: RPL5 Synonyms: RPL5, 60S ribosomal protein L5, DBA6, L5, Ribosomal protein L5, MSTP030
Gene ID:	6125
NCBI Accession:	NP_000960
UniProt:	P46777

Application Details

Application Notes:	Approved: IHC, IHC-P (5 µg/mL), WB (0.2 - 1 µg/mL) Usage: Western Blot: Suggested dilution at 1 µg/mL in 5 % skim milk / PBS buffer, and HRP conjugated anti-Rabbit IgG should be diluted in 1: 50,000 - 100,000 as secondary antibody.
Comment:	Target Species of Antibody: Human
Restrictions:	For Research Use only

Handling

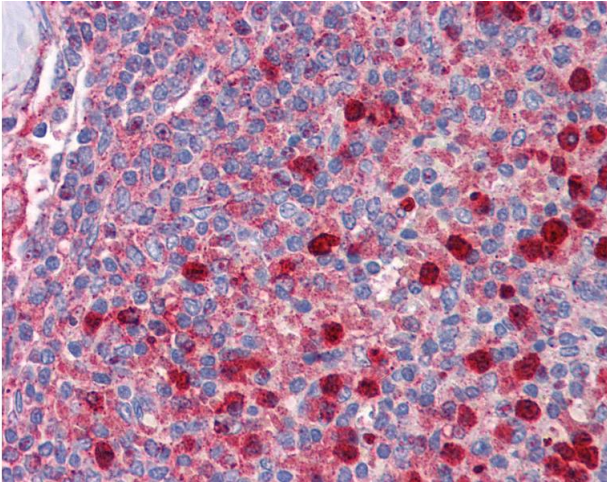
Format:	Lyophilized
Reconstitution:	Distilled water
Concentration:	Lot specific
Buffer:	Lyophilized from PBS with 2 % sucrose
Handling Advice:	Avoid repeat freeze-thaw cycles.
Storage:	4 °C, -20 °C
Storage Comment:	Long term: -20°C, the use of 50% glycerol is recommended if storing aliquots in -20°C for long

Handling

term use (up to 1 year)

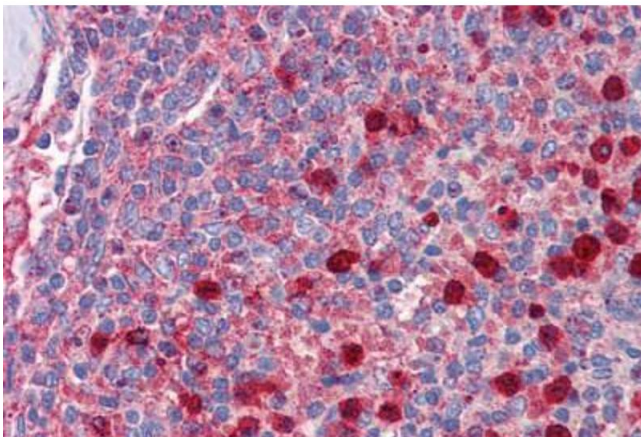
Short term (less than 1 week): 4°C. Avoid freeze-thaw cycles.

Images



Immunohistochemistry

Image 1. Anti-RPL5 antibody IHC of human spleen. Immunohistochemistry of formalin-fixed, paraffin-embedded tissue after heat-induced antigen retrieval. Antibody concentration 5 ug/ml. This image was taken for the unconjugated form of this product. Other form ...



Immunohistochemistry (Formalin-fixed Paraffin-embedded Sections)

Image 2. Human Spleen: Formalin-Fixed, Paraffin-Embedded (FFPE)