



[Go to Product page](#)

Datasheet for ABIN6747179
anti-PPID antibody (AA 71-120)

2 Images

Overview

Quantity:	100 µL
Target:	PPID
Binding Specificity:	AA 71-120
Reactivity:	Human, Mouse, Rat, Dog, Zebrafish (Danio rerio), Rabbit, Guinea Pig, Cow, Horse, Monkey, Pig, Bat, Chicken, Xenopus laevis
Host:	Rabbit
Clonality:	Polyclonal
Conjugate:	This PPID antibody is un-conjugated
Application:	Western Blotting (WB), Immunohistochemistry (IHC), Immunohistochemistry (Paraffin-embedded Sections) (IHC (p))

Product Details

Brand:	IHC-plus™
Immunogen:	Synthetic peptide located between aa71-120 of human PPID (Q08752, NP_005029). Percent identity by BLAST analysis: Human, Chimpanzee, Gorilla, Gibbon, Monkey, Marmoset, Mouse, Rat, Dog, Bovine, Bat, Rabbit, Horse, Pig, Guinea pig, Turkey, Zebra finch, Chicken, Platypus, Lizard, Xenopus, Trout, Salmon, Zebrafish (100%), Galago, Elephant, Stickleback, Arabidopsis (92%), Drosophila (91%), Blood fluke (85%). Type of Immunogen: Synthetic peptide
Isotype:	IgG

Product Details

Specificity:	Human PPID / Cyclophilin 40
Predicted Reactivity:	Percent identity by BLAST analysis: Human, Mouse, Rat, Dog, Bovine, Rabbit, Pig, Chicken, Zebrafish (100%) Xenopus (92%).
Purification:	Immunoaffinity purified

Target Details

Target:	PPID
Alternative Name:	PPID / Cyclophilin D (PPID Products)
Background:	Name/Gene ID: PPID Synonyms: PPID, Cyclophilin-40, CYP40, CYP-40, Cyclophilin 40, Cyclophilin-related protein, CYPD, PPlase D, Cyclophilin D, Peptidylprolyl isomerase D, Rotamase D
Gene ID:	5481
NCBI Accession:	NP_005029
UniProt:	Q08752
Pathways:	Nuclear Hormone Receptor Binding

Application Details

Application Notes:	Approved: IHC, IHC-P (5 µg/mL), WB (0.2 - 1 µg/mL) Usage: Western Blot: Suggested dilution at 1.0 µg/mL in 5 % skim milk / PBS buffer, and HRP conjugated anti-Rabbit IgG should be diluted in 1: 50,000 - 100,000 as second antibody. ELISA titer in peptide based assay: 1:1562500.
Comment:	Target Species of Antibody: Human
Restrictions:	For Research Use only

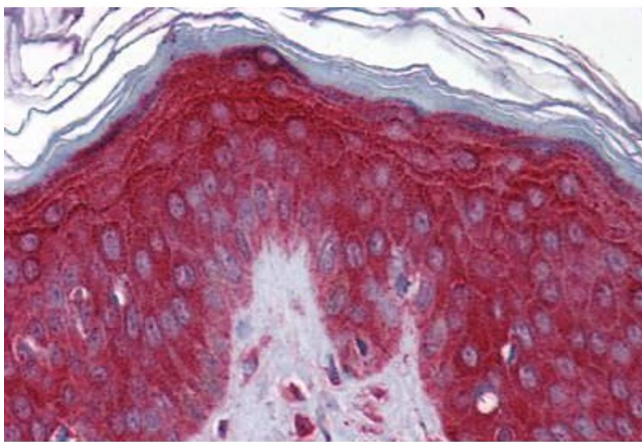
Handling

Format:	Lyophilized
Reconstitution:	Distilled water
Concentration:	Lot specific

Handling

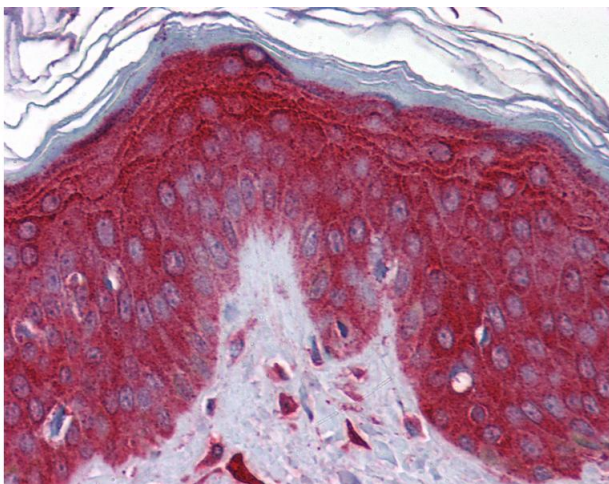
Buffer:	Lyophilized from PBS with 2 % sucrose
Handling Advice:	Avoid repeat freeze-thaw cycles.
Storage:	4 °C, -20 °C
Storage Comment:	Long term: -20°C, the use of 50% glycerol is recommended if storing aliquots in -20°C for long term use (up to 1 year) Short term (less than 1 week): 4°C. Avoid freeze-thaw cycles.

Images



Immunohistochemistry (Formalin-fixed Paraffin-embedded Sections)

Image 1. Human Skin: Formalin-Fixed, Paraffin-Embedded (FFPE)



Immunohistochemistry

Image 2. Anti-PPID / Cyclophilin 40 antibody IHC of human skin. Immunohistochemistry of formalin-fixed, paraffin-embedded tissue after heat-induced antigen retrieval. Antibody concentration 5 ug/ml. This image was taken for the unconjugated form of this prod ...