

Datasheet for ABIN6747181
anti-RAB23 antibody (AA 35-84)[Go to Product page](#)

2 Images

Overview

Quantity:	100 µL
Target:	RAB23
Binding Specificity:	AA 35-84
Reactivity:	Human, Mouse, Rat, Dog, Rabbit, Horse, Zebrafish (Danio rerio), Cow, Monkey, Bat, Hamster
Host:	Rabbit
Clonality:	Polyclonal
Conjugate:	This RAB23 antibody is un-conjugated
Application:	Western Blotting (WB), Immunohistochemistry (IHC), Immunohistochemistry (Paraffin-embedded Sections) (IHC (p))

Product Details

Brand:	IHC-plus™
Immunogen:	Synthetic peptide located between aa35-84 of human RAB23 (Q9ULC3, NP_057361). Percent identity by BLAST analysis: Human, Chimpanzee, Gibbon, Monkey, Galago, Marmoset, Mouse, Rat, Hamster, Elephant, Panda, Dog, Bovine, Bat, Rabbit, Horse, Opossum, Turkey, Platypus (100%), Pig, Guinea pig, Zebra finch, Chicken, Xenopus (92%), Lizard, Stickleback, Zebrafish (85%). Type of Immunogen: Synthetic peptide
Isotype:	IgG
Specificity:	Human RAB23

Product Details

Predicted Reactivity: Percent identity by BLAST analysis: Human, Mouse, Rat, Dog, Bovine (100%) Chicken, Xenopus (92%) Zebrafish (85%).

Purification: Immunoaffinity purified

Target Details

Target: RAB23

Alternative Name: RAB23 ([RAB23 Products](#))

Background: Name/Gene ID: RAB23
Subfamily: RAS oncogene
Family: Ras GTPase superfamily IPR001806

Synonyms: RAB23, Ras-related protein Rab-23, HSPC137

Gene ID: 51715

NCBI Accession: [NP_057361](#)

UniProt: [Q9ULC3](#)

Pathways: [Tube Formation](#)

Application Details

Application Notes: Approved: IHC, IHC-P (5 µg/mL), WB (0.2 - 1 µg/mL)

Usage: Western Blot: Suggested dilution at 1 µg/mL in 5 % skim milk / PBS buffer, and HRP conjugated anti-Rabbit IgG should be diluted in 1: 50,000 - 100,000 as second antibody. ELISA titer in peptide based assay: 1:62500.

Comment: Target Species of Antibody: Human

Restrictions: For Research Use only

Handling

Format: Lyophilized

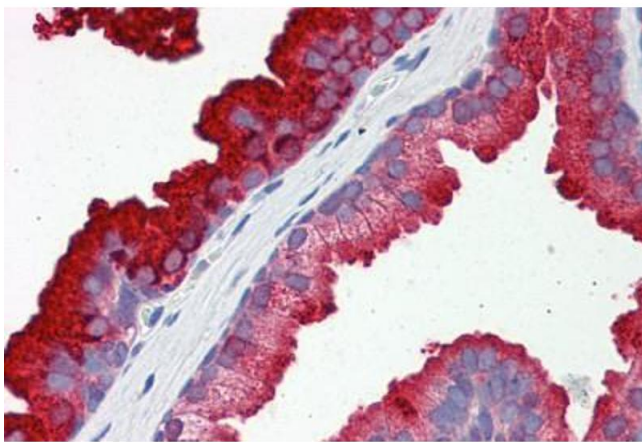
Reconstitution: Distilled water

Concentration: Lot specific

Handling

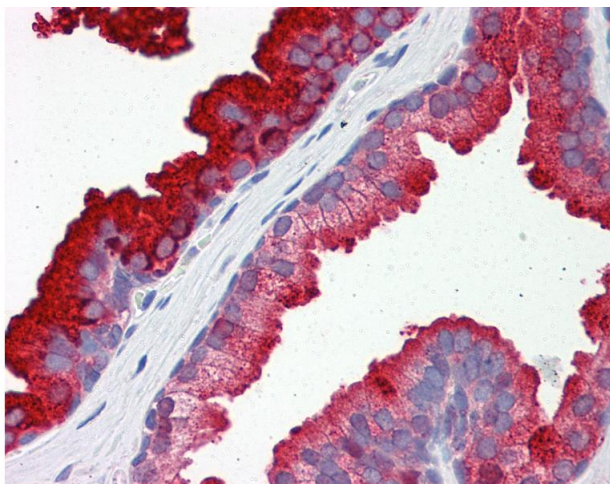
Buffer:	Lyophilized from PBS with 2 % sucrose
Handling Advice:	Avoid repeat freeze-thaw cycles.
Storage:	4 °C, -20 °C
Storage Comment:	Long term: -20°C, the use of 50% glycerol is recommended if storing aliquots in -20°C for long term use (up to 1 year) Short term (less than 1 week): 4°C. Avoid freeze-thaw cycles.

Images



Immunohistochemistry (Formalin-fixed Paraffin-embedded Sections)

Image 1. Human Prostate: Formalin-Fixed, Paraffin-Embedded (FFPE)



Immunohistochemistry

Image 2. Anti-RAB23 antibody IHC of human prostate. Immunohistochemistry of formalin-fixed, paraffin-embedded tissue after heat-induced antigen retrieval. Antibody concentration 5 ug/ml. This image was taken for the unconjugated form of this product. Other f ...