

Datasheet for ABIN6747182  
**anti-NASP antibody (AA 287-336)**

## 2 Images

[Go to Product page](#)

## Overview

Quantity:	100 µL
Target:	NASP
Binding Specificity:	AA 287-336
Reactivity:	Human, Rat, Mouse, Rabbit, Cow, Zebrafish (Danio rerio), Dog
Host:	Rabbit
Clonality:	Polyclonal
Conjugate:	This NASP antibody is un-conjugated
Application:	Western Blotting (WB), Immunohistochemistry (IHC), Immunohistochemistry (Paraffin-embedded Sections) (IHC (p))

## Product Details

Brand:	IHC-plus™
Immunogen:	Synthetic peptide located between aa287-336 of human NASP (Q5T626, NP_689511). Percent identity by BLAST analysis: Human, Chimpanzee, Gorilla, Gibbon, Marmoset, Mouse, Rat, Elephant, Dog, Bovine, Rabbit, Zebrafish (100%), Monkey, Bat, Horse, Opossum, Guinea pig (92%), Platypus (84%), Turkey, Chicken, Lizard (83%).  Type of Immunogen: Synthetic peptide
Specificity:	Human NASP
Predicted Reactivity:	Percent identity by BLAST analysis: Human, Mouse, Rat, Dog, Bovine, Rabbit, Zebrafish (100%) Horse, Guinea pig (92%) Chicken (83%).

## Product Details

Purification: Immunoaffinity purified

## Target Details

Target: NASP

Alternative Name: NASP ([NASP Products](#))

Background: Name/Gene ID: NASP

Synonyms: NASP, Histone H1-binding protein, PR01999, FLB7527

Gene ID: 4678

NCBI Accession: [NP\\_689511](#)

UniProt: [P49321](#)

## Application Details

Application Notes: Approved: IHC, IHC-P (5 µg/mL), WB (0.2 - 1 µg/mL)

Usage: Western Blot: Suggested dilution at 1 µg/mL in 5 % skim milk / PBS buffer, and HRP conjugated anti-Rabbit IgG should be diluted in 1: 50,000 - 100,000 as secondary antibody.

Comment: Target Species of Antibody: Human

Restrictions: For Research Use only

## Handling

Format: Lyophilized

Reconstitution: Distilled water

Concentration: Lot specific

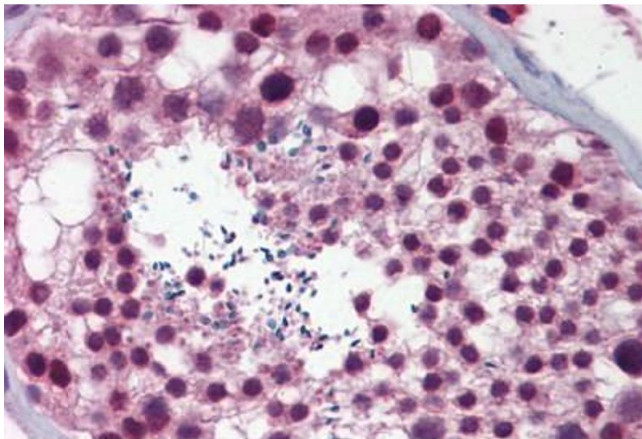
Buffer: Lyophilized from PBS with 2 % sucrose

Handling Advice: Avoid repeat freeze-thaw cycles.

Storage: 4 °C, -20 °C

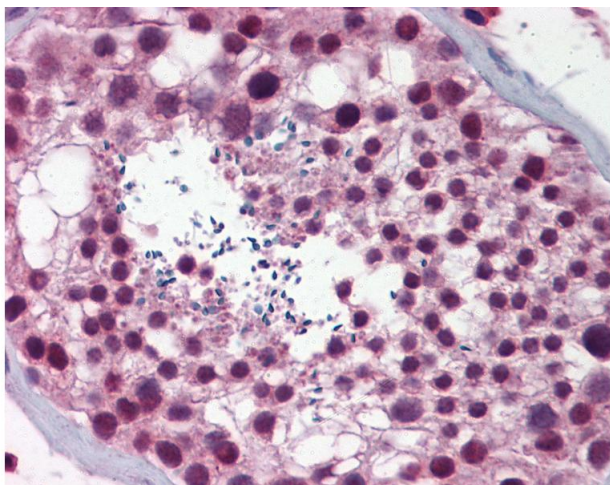
Storage Comment: Long term: -20°C, the use of 50% glycerol is recommended if storing aliquots in -20°C for long term use (up to 1 year)

Short term (less than 1 week): 4°C. Avoid freeze-thaw cycles.



#### Immunohistochemistry (Formalin-fixed Paraffin-embedded Sections)

**Image 1.** Human Testis: Formalin-Fixed, Paraffin-Embedded (FFPE)



#### Immunohistochemistry

**Image 2.** Anti-NASP antibody IHC of human testis. Immunohistochemistry of formalin-fixed, paraffin-embedded tissue after heat-induced antigen retrieval. Antibody concentration 5 ug/ml. This image was taken for the unconjugated form of this product. Other form ...