

Datasheet for ABIN6747193  
**anti-MYH7 antibody (AA 1251-1300)**[Go to Product page](#)

## 2 Images

## Overview

Quantity:	100 µL
Target:	MYH7
Binding Specificity:	AA 1251-1300
Reactivity:	Human, Mouse, Rat, Rabbit, Cow, Dog, Guinea Pig, Horse, Bat, Hamster, Monkey, Pig
Host:	Rabbit
Clonality:	Polyclonal
Conjugate:	This MYH7 antibody is un-conjugated
Application:	Western Blotting (WB), Immunohistochemistry (IHC), Immunohistochemistry (Paraffin-embedded Sections) (IHC (p))

## Product Details

Brand:	IHC-plus™
Immunogen:	<p>Synthetic peptide located between aa1251-1300 of mouse Myh7 (Q91Z83, NP_542766).</p> <p>Percent identity by BLAST analysis: Human, Chimpanzee, Gorilla, Gibbon, Monkey, Galago, Marmoset, Mouse, Rat, Hamster, Elephant, Dog, Bovine, Bat, Rabbit, Horse, Pig, Opossum, Guinea pig, Platypus (100%), Panda, Zebra finch, Chicken (92%), Xenopus, Zebrafish (85%).</p> <p>Type of Immunogen: Synthetic peptide</p>
Specificity:	Mouse MYH7
Predicted Reactivity:	Percent identity by BLAST analysis: Human, Mouse, Rat, Dog, Bovine, Horse, Pig (100%) Chicken (84%).

## Product Details

Purification: Immunoaffinity purified

## Target Details

Target: MYH7

Alternative Name: MYH7 ([MYH7 Products](#))

Background: Name/Gene ID: MYH7

Synonyms: MYH7, Beta-myosin heavy chain, MYHCB, Myosin heavy chain (AA 1-96), MPD1, Myhc-slow, Myopathy, distal 1, Myosin heavy chain 7, MyHC-beta, Myosin-7, CMD1S, CMH1, SPMD, SPMM

Gene ID: 4625

NCBI Accession: [NP\\_542766](#)

UniProt: [P12883](#)

## Application Details

Application Notes: Approved: IHC, IHC-P (2.5 µg/mL), WB (0.2 - 1 µg/mL)

Usage: Western Blot: Suggested dilution at 1 µg/mL in 5 % skim milk / PBS buffer, and HRP conjugated anti-Rabbit IgG should be diluted in 1: 50,000 - 100,000 as secondary antibody.

Comment: Target Species of Antibody: Mouse

Restrictions: For Research Use only

## Handling

Format: Lyophilized

Reconstitution: Reconstitute with 50 µL sterile ddH2O.

Concentration: Lot specific

Buffer: Lyophilized from PBS with 2 % sucrose

Handling Advice: Avoid repeat freeze-thaw cycles.

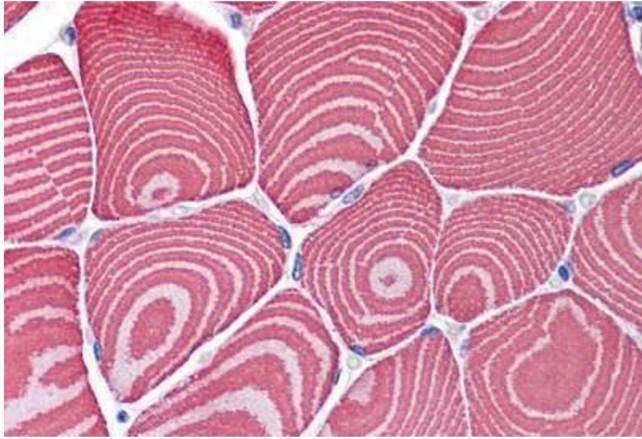
Storage: 4 °C, -20 °C

Storage Comment: Long term: -20°C, the use of 50% glycerol is recommended if storing aliquots in -20°C for long

term use (up to 1 year)

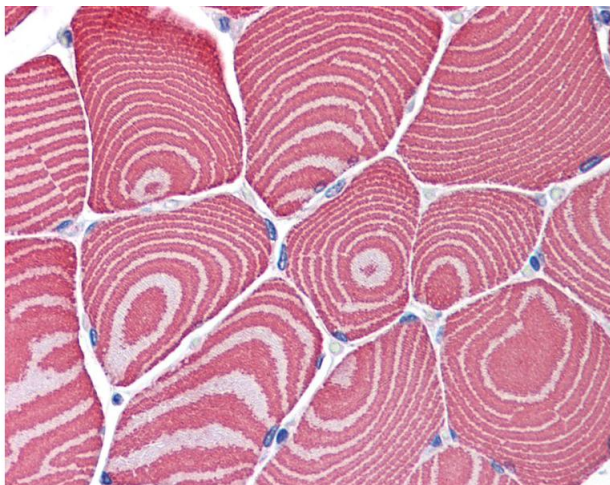
Short term (less than 1 week): 4°C. Avoid freeze-thaw cycles.

## Images



### Immunohistochemistry (Formalin-fixed Paraffin-embedded Sections)

**Image 1.** Human Skeletal Muscle: Formalin-Fixed, Paraffin-Embedded (FFPE)



### Immunohistochemistry

**Image 2.** Anti-MYH7 antibody IHC of human skeletal muscle. Immunohistochemistry of formalin-fixed, paraffin-embedded tissue after heat-induced antigen retrieval. Antibody concentration 2.5 ug/ml. This image was taken for the unconjugated form of this product. ...