



Datasheet for ABIN6747194
anti-Parkin antibody (AA 311-360)



[Go to Product page](#)

2 Images

Overview

Quantity:	100 µL
Target:	Parkin (PARK2)
Binding Specificity:	AA 311-360
Reactivity:	Human, Mouse, Rat
Host:	Rabbit
Clonality:	Polyclonal
Conjugate:	This Parkin antibody is un-conjugated
Application:	Western Blotting (WB), Immunohistochemistry (IHC), Immunohistochemistry (Paraffin-embedded Sections) (IHC (p))

Product Details

Brand:	IHC-plus™
Immunogen:	Synthetic peptide located between aa311-360 of mouse Park2 (Q9WVS6, NP_057903). Percent identity by BLAST analysis: Human, Orangutan, Mouse (100%), Monkey, Bovine, Bat, Pig (92%), Galago (84%), Rat (78%). Type of Immunogen: Synthetic peptide
Specificity:	Mouse PARK2
Predicted Reactivity:	Percent identity by BLAST analysis: Human (100%) Bovine, Pig (92%) Mouse (85%).
Purification:	Immunoaffinity purified

Target Details

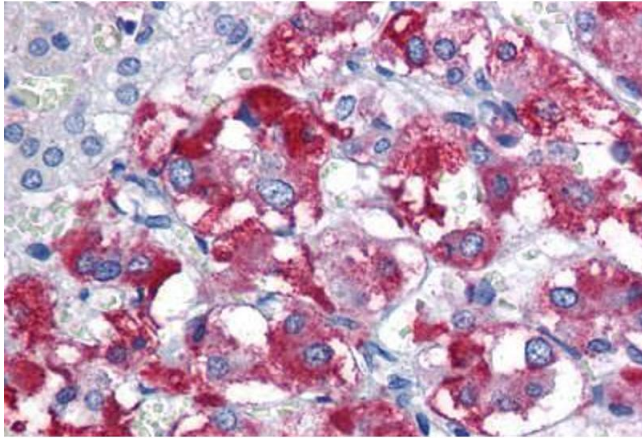
Target:	Parkin (PARK2)
Alternative Name:	PARK2 / Parkin 2 (PARK2 Products)
Background:	Name/Gene ID: PARK2 Synonyms: PARK2, AR-JP, LPRS2, Parkin, PDJ, Parkinson disease protein 2, PRKN
Gene ID:	5071
NCBI Accession:	NP_057903
UniProt:	O60260
Pathways:	Autophagy, Ubiquitin Proteasome Pathway

Application Details

Application Notes:	Approved: IHC, IHC-P (5 µg/mL), WB (0.2 - 1 µg/mL) Usage: Western Blot: Suggested dilution at 1 µg/mL in 5 % skim milk / PBS buffer, and HRP conjugated anti-Rabbit IgG should be diluted in 1: 50,000 - 100,000 as secondary antibody.
Comment:	Target Species of Antibody: Mouse
Restrictions:	For Research Use only

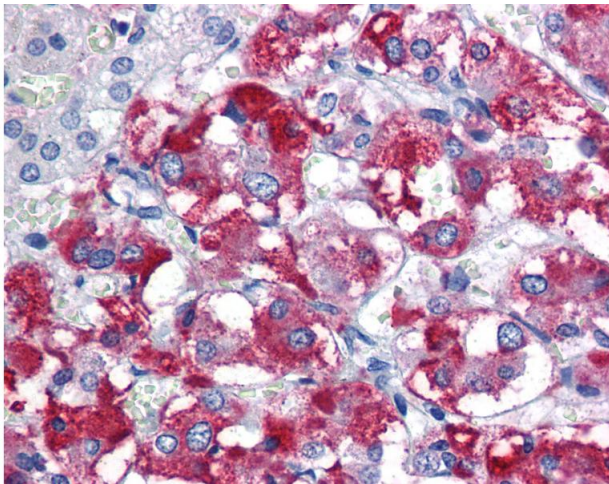
Handling

Format:	Lyophilized
Reconstitution:	Distilled water
Concentration:	Lot specific
Buffer:	Lyophilized from PBS with 2 % sucrose
Handling Advice:	Avoid repeat freeze-thaw cycles.
Storage:	4 °C,-20 °C
Storage Comment:	Long term: -20°C, the use of 50% glycerol is recommended if storing aliquots in -20°C for long term use (up to 1 year) Short term (less than 1 week): 4°C. Avoid freeze-thaw cycles.



Immunohistochemistry (Formalin-fixed Paraffin-embedded Sections)

Image 1. Human Adrenal: Formalin-Fixed, Paraffin-Embedded (FFPE)



Immunohistochemistry

Image 2. Anti-PARK2 antibody IHC of human adrenal. Immunohistochemistry of formalin-fixed, paraffin-embedded tissue after heat-induced antigen retrieval. Antibody concentration 5 ug/ml. This image was taken for the unconjugated form of this product. Other fo ...