

Datasheet for ABIN6747200
anti-WNT3A antibody (AA 227-276)[Go to Product page](#)

2 Images

Overview

Quantity:	100 µL
Target:	WNT3A
Binding Specificity:	AA 227-276
Reactivity:	Human, Mouse, Rat, Cow, Pig, Rabbit, Monkey
Host:	Rabbit
Clonality:	Polyclonal
Conjugate:	This WNT3A antibody is un-conjugated
Application:	Western Blotting (WB), Immunohistochemistry (IHC), Immunohistochemistry (Paraffin-embedded Sections) (IHC (p))

Product Details

Brand:	IHC-plus™
Immunogen:	Synthetic peptide located between aa227-276 of mouse Wnt3a (P27467, NP_033548). Percent identity by BLAST analysis: Human, Chimpanzee, Gibbon, Monkey, Galago, Marmoset, Mouse, Rat, Panda, Bovine, Pig (100%), Dog, Horse, Guinea pig (92%), Gorilla, Rabbit, Platypus (85%). Type of Immunogen: Synthetic peptide
Specificity:	Mouse WNT3A
Predicted Reactivity:	Percent identity by BLAST analysis: Human, Mouse, Rat (100%) Dog, Horse, Guinea pig (92%) Rabbit (85%).
Purification:	Immunoaffinity purified

Target Details

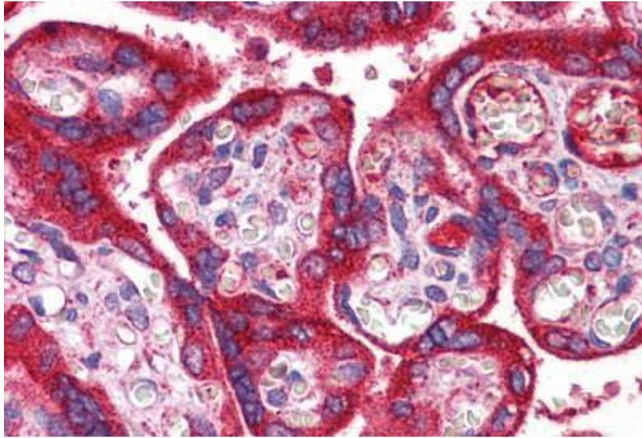
Target:	WNT3A
Alternative Name:	WNT3A (WNT3A Products)
Background:	Name/Gene ID: WNT3A Family: WNT Synonyms: WNT3A, Protein Wnt-3a
Gene ID:	89780
NCBI Accession:	NP_033548
UniProt:	P56704
Pathways:	WNT Signaling , Regulation of Muscle Cell Differentiation , Regulation of Cell Size , Positive Regulation of Endopeptidase Activity

Application Details

Application Notes:	Approved: IHC, IHC-P (2.5 µg/mL), WB (1 µg/mL) Usage: Western Blot: Suggested dilution at 1 µg/mL in 5 % skim milk / PBS buffer, and HRP conjugated anti-Rabbit IgG should be diluted in 1: 50,000 - 100,000 as secondary antibody.
Comment:	Target Species of Antibody: Mouse
Restrictions:	For Research Use only

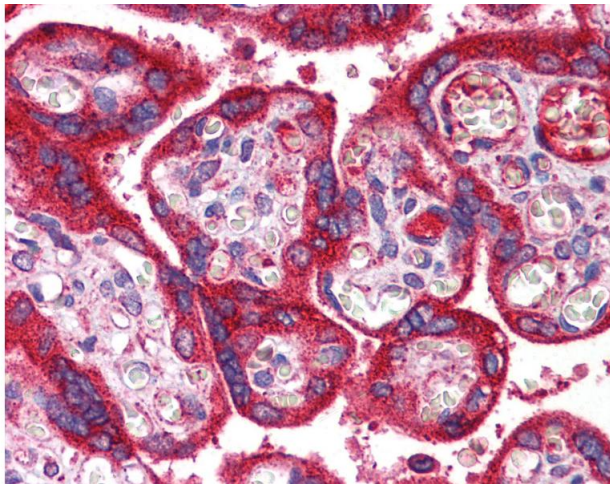
Handling

Format:	Lyophilized
Reconstitution:	Distilled water
Concentration:	Lot specific
Buffer:	Lyophilized from PBS with 2 % sucrose
Handling Advice:	Avoid repeat freeze-thaw cycles.
Storage:	4 °C, -20 °C
Storage Comment:	Long term: -20°C, the use of 50% glycerol is recommended if storing aliquots in -20°C for long term use (up to 1 year) Short term (less than 1 week): 4°C. Avoid freeze-thaw cycles.



Immunohistochemistry (Formalin-fixed Paraffin-embedded Sections)

Image 1. Human Placenta: Formalin-Fixed, Paraffin-Embedded (FFPE)



Immunohistochemistry

Image 2. Anti-WNT3A antibody IHC of human placenta. Immunohistochemistry of formalin-fixed, paraffin-embedded tissue after heat-induced antigen retrieval. Antibody concentration 2.5 ug/ml. This image was taken for the unconjugated form of this product. Other ...