



Datasheet for ABIN6747201
anti-ATG12 antibody (AA 79-128)



[Go to Product page](#)

2 Images

Overview

Quantity:	100 µL
Target:	ATG12
Binding Specificity:	AA 79-128
Reactivity:	Human, Mouse, Rat, Cow, Dog, Guinea Pig, Horse, Zebrafish (Danio rerio), Monkey, Pig, Rabbit, Chicken, Xenopus laevis, Bat
Host:	Rabbit
Clonality:	Polyclonal
Conjugate:	This ATG12 antibody is un-conjugated
Application:	Western Blotting (WB), Immunohistochemistry (IHC), Immunohistochemistry (Paraffin-embedded Sections) (IHC (p))

Product Details

Brand:	IHC-plus™
Immunogen:	Synthetic peptide located between aa79-128 of rat Atg12 (Q2TBJ5, NP_001033584). Percent identity by BLAST analysis: Human, Gorilla, Orangutan, Monkey, Galago, Marmoset, Mouse, Rat, Elephant, Dog, Bovine, Bat, Rabbit, Horse, Pig, Opossum, Guinea pig, Zebra finch, Chicken, Xenopus (100%), Zebrafish (85%). Type of Immunogen: Synthetic peptide
Specificity:	Rat ATG12
Predicted Reactivity:	Percent identity by BLAST analysis: Human, Mouse, Rat, Dog, Bovine, Pig, Guinea pig, Chicken,

Product Details

Xenopus (100%) Zebrafish (85%).

Purification: Immunoaffinity purified

Target Details

Target: ATG12

Alternative Name: APG12 / ATG12 ([ATG12 Products](#))

Background: Name/Gene ID: ATG12

Synonyms: ATG12, Autophagy-related protein 12, APG12L, Autophagy related 12, FBR93, APG12, APG12-like, Ubiquitin-like protein ATG12, HAPG12

Gene ID: 9140

NCBI Accession: [NP_001033584](#)

UniProt: [O94817](#)

Pathways: [Autophagy](#)

Application Details

Application Notes: Approved: IHC, IHC-P (2.5 µg/mL), WB (0.2 - 1 µg/mL)

Usage: Western Blot: Suggested dilution at 1 µg/mL in 5 % skim milk / PBS buffer, and HRP conjugated anti-Rabbit IgG should be diluted in 1: 50,000 - 100,000 as secondary antibody.

Comment: Target Species of Antibody: Rat

Restrictions: For Research Use only

Handling

Format: Lyophilized

Reconstitution: Distilled water

Concentration: Lot specific

Buffer: Lyophilized from PBS with 2 % sucrose

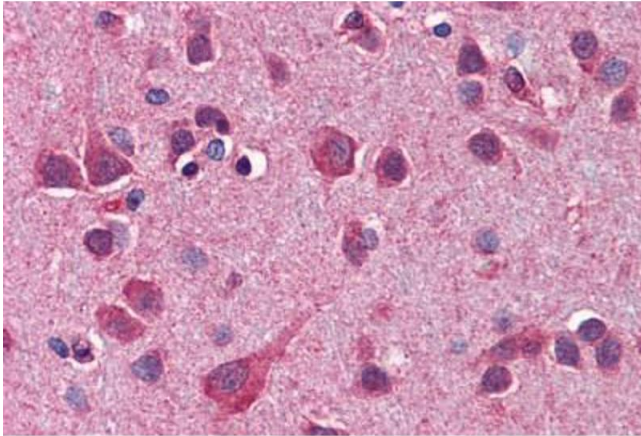
Handling Advice: Avoid repeat freeze-thaw cycles.

Storage: 4 °C,-20 °C

Handling

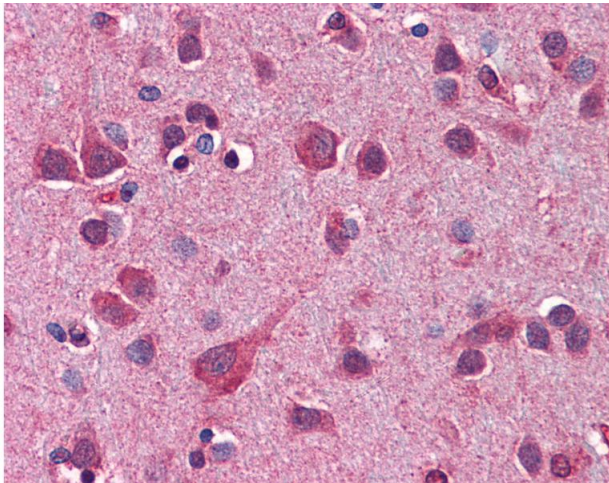
Storage Comment: Long term: -20°C, the use of 50% glycerol is recommended if storing aliquots in -20°C for long term use (up to 1 year)
Short term (less than 1 week): 4°C. Avoid freeze-thaw cycles.

Images



Immunohistochemistry (Formalin-fixed Paraffin-embedded Sections)

Image 1. Human Brain, Cortex: Formalin-Fixed, Paraffin-Embedded (FFPE)



Immunohistochemistry

Image 2. Anti-ATG12 antibody IHC of human brain, cortex. Immunohistochemistry of formalin-fixed, paraffin-embedded tissue after heat-induced antigen retrieval. Antibody concentration 2.5 ug/ml. This image was taken for the unconjugated form of this product. ...