



Datasheet for ABIN6747210 **anti-RNF166 antibody (AA 70-119)**



[Go to Product page](#)

1 Image

Overview

Quantity:	100 µL
Target:	RNF166
Binding Specificity:	AA 70-119
Reactivity:	Human, Mouse, Rat, Horse, Guinea Pig, Bat, Monkey
Host:	Rabbit
Clonality:	Polyclonal
Conjugate:	This RNF166 antibody is un-conjugated
Application:	Western Blotting (WB)

Product Details

Immunogen:	Synthetic peptide located between aa70-119 of mouse Rnf166 (Q3U9F6, NP_001028314). Percent identity by BLAST analysis: Human, Gorilla, Gibbon, Monkey, Marmoset, Mouse, Rat, Bat, Horse, Guinea pig (100%), Elephant, Dog, Bovine (92%), Galago, Opossum, Platypus, Xenopus (85%). Type of Immunogen: Synthetic peptide
Specificity:	Mouse RNF166
Predicted Reactivity:	Percent identity by BLAST analysis: Mouse, Horse (100%) Dog, Bovine (92%).
Purification:	Immunoaffinity purified

Target Details

Target:	RNF166
Alternative Name:	RNF166 (RNF166 Products)
Background:	Name/Gene ID: RNF166 Synonyms: RNF166, Ring finger protein 166
Gene ID:	115992
NCBI Accession:	NP_001028314
UniProt:	Q96A37

Application Details

Application Notes:	Optimal working dilution should be determined by the investigator.
Comment:	Target Species of Antibody: Mouse
Restrictions:	For Research Use only

Handling

Format:	Lyophilized
Reconstitution:	Distilled water
Concentration:	Lot specific
Buffer:	Lyophilized from PBS with 2 % sucrose
Handling Advice:	Avoid repeat freeze-thaw cycles.
Storage:	4 °C, -20 °C
Storage Comment:	Long term: -20°C, the use of 50% glycerol is recommended if storing aliquots in -20°C for long term use (up to 1 year) Short term (less than 1 week): 4°C. Avoid freeze-thaw cycles.

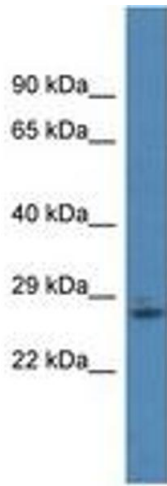


Image 1.