



Datasheet for ABIN6747212
anti-PCDH10 antibody (AA 960-1009)



[Go to Product page](#)

1 Image

Overview

Quantity:	100 µL
Target:	PCDH10
Binding Specificity:	AA 960-1009
Reactivity:	Human, Rat, Mouse, Rabbit, Cow, Dog, Guinea Pig, Bat, Chicken, Monkey, Xenopus laevis
Host:	Rabbit
Clonality:	Polyclonal
Conjugate:	This PCDH10 antibody is un-conjugated
Application:	Western Blotting (WB)

Product Details

Immunogen:	Synthetic peptide located between aa960-1009 of mouse Pcdh10 (E9PXQ7, NP_001091640). Percent identity by BLAST analysis: Human, Gorilla, Gibbon, Monkey, Galago, Marmoset, Mouse, Rat, Elephant, Dog, Bovine, Bat, Rabbit, Opossum, Guinea pig, Chicken, Lizard, Xenopus (100%), Zebrafish (90%). Type of Immunogen: Synthetic peptide
Specificity:	Mouse PCDH10
Predicted Reactivity:	Percent identity by BLAST analysis: Human, Mouse, Rat, Dog, Bovine, Rabbit, Guinea pig, Chicken (100%) Zebrafish (90%).
Purification:	Immunoaffinity purified

Target Details

Target:	PCDH10
Alternative Name:	PCDH10 (PCDH10 Products)
Background:	Name/Gene ID: PCDH10 Family: Cadherin Synonyms: PCDH10, KIAA1400, OL-protocadherin, OL-PCDH, Protocadherin-10, Ortholog of OL-pcdh, Protocadherin 10
Gene ID:	57575
NCBI Accession:	NP_001091640
UniProt:	Q9P2E7

Application Details

Application Notes:	Optimal working dilution should be determined by the investigator.
Comment:	Target Species of Antibody: Mouse
Restrictions:	For Research Use only

Handling

Format:	Lyophilized
Reconstitution:	Distilled water
Concentration:	Lot specific
Buffer:	Lyophilized from PBS with 2 % sucrose
Handling Advice:	Avoid repeat freeze-thaw cycles.
Storage:	4 °C,-20 °C
Storage Comment:	Long term: -20°C, the use of 50% glycerol is recommended if storing aliquots in -20°C for long term use (up to 1 year) Short term (less than 1 week): 4°C. Avoid freeze-thaw cycles.

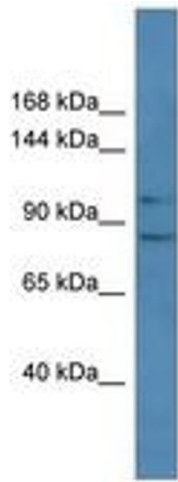


Image 1.