



[Go to Product page](#)

Datasheet for ABIN6747224
anti-CYB5R1 antibody (AA 93-142)

1 Image

Overview

Quantity:	100 µL
Target:	CYB5R1
Binding Specificity:	AA 93-142
Reactivity:	Human, Mouse, Rat, Dog, Guinea Pig, Horse, Rabbit, Zebrafish (Danio rerio), Cow, Bat, Hamster, Monkey, Pig
Host:	Rabbit
Clonality:	Polyclonal
Conjugate:	This CYB5R1 antibody is un-conjugated
Application:	Western Blotting (WB)

Product Details

Immunogen:	Synthetic peptide located between aa93-142 of mouse Cyb5r1 (Q9DB73, NP_082333). Percent identity by BLAST analysis: Human, Gorilla, Gibbon, Monkey, Galago, Marmoset, Mouse, Rat, Hamster, Bovine, Bat, Rabbit, Horse, Pig, Guinea pig (100%), Elephant, Opossum, Lizard (92%), Dog, Turkey, Chicken, Platypus, Xenopus (85%), Grape, Castor bean (84%). Type of Immunogen: Synthetic peptide
Specificity:	Mouse CYB5R1
Predicted Reactivity:	Percent identity by BLAST analysis: Mouse, Rat, Bovine, Rabbit, Horse, Pig, Guinea pig (100%) Dog (85%).
Purification:	Immunoaffinity purified

Target Details

Target:	CYB5R1
Alternative Name:	CYB5R1 (CYB5R1 Products)
Background:	Name/Gene ID: CYB5R1 Synonyms: CYB5R1, B5R2, Cytochrome b5 reductase 1, NADH-cytochrome b5 reductase 1, NQO3A2, B5R.1, B5R1, CYB5BR1, Humb5R2
Gene ID:	51706
NCBI Accession:	NP_082333
UniProt:	Q9UHQ9

Application Details

Application Notes:	Optimal working dilution should be determined by the investigator.
Comment:	Target Species of Antibody: Mouse
Restrictions:	For Research Use only

Handling

Format:	Lyophilized
Reconstitution:	Distilled water
Concentration:	Lot specific
Buffer:	Lyophilized from PBS with 2 % sucrose
Handling Advice:	Avoid repeat freeze-thaw cycles.
Storage:	4 °C, -20 °C
Storage Comment:	Long term: -20°C, the use of 50% glycerol is recommended if storing aliquots in -20°C for long term use (up to 1 year) Short term (less than 1 week): 4°C. Avoid freeze-thaw cycles.

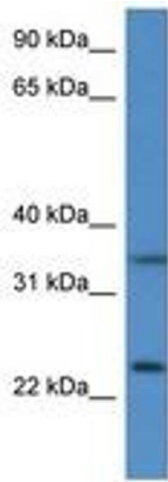


Image 1.