



[Go to Product page](#)

Datasheet for ABIN6747234  
**anti-KLHDC9 antibody (AA 261-310)**

1 Image

Overview

Quantity:	100 µL
Target:	KLHDC9
Binding Specificity:	AA 261-310
Reactivity:	Human, Mouse, Cow, Xenopus laevis
Host:	Rabbit
Clonality:	Polyclonal
Conjugate:	This KLHDC9 antibody is un-conjugated
Application:	Western Blotting (WB)

Product Details

Immunogen:	Synthetic peptide located between aa261-310 of mouse Klhdc9 (Q3USL1, NP_001028211). Percent identity by BLAST analysis: Human, Gorilla, Gibbon, Mouse, Xenopus (100%), Rat, Hamster, Dog, Rabbit, Pig (92%), Elephant, Panda, Bovine, Horse, Guinea pig (85%), Opossum (84%).  Type of Immunogen: Synthetic peptide
Specificity:	Mouse KLHDC9
Predicted Reactivity:	Percent identity by BLAST analysis: Mouse, Rat, Dog, Rabbit (92%) Bovine (85%).
Purification:	Immunoaffinity purified

## Target Details

---

Target:	KLHDC9
Alternative Name:	KLHDC9 ( <a href="#">KLHDC9 Products</a> )
Background:	Name/Gene ID: KLHDC9  Synonyms: KLHDC9, Kelch domain containing 9, KARCA1
Gene ID:	126823
NCBI Accession:	<a href="#">NP_001028211</a>
UniProt:	<a href="#">Q8NEP7</a>

## Application Details

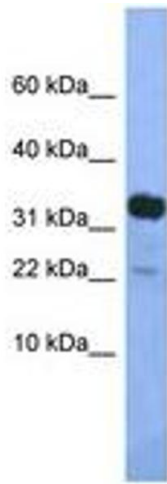
---

Application Notes:	Optimal working dilution should be determined by the investigator.
Comment:	Target Species of Antibody: Mouse
Restrictions:	For Research Use only

## Handling

---

Format:	Lyophilized
Reconstitution:	Distilled water
Concentration:	Lot specific
Buffer:	Lyophilized from PBS with 2 % sucrose
Handling Advice:	Avoid repeat freeze-thaw cycles.
Storage:	4 °C, -20 °C
Storage Comment:	Long term: -20°C, the use of 50% glycerol is recommended if storing aliquots in -20°C for long term use (up to 1 year)  Short term (less than 1 week): 4°C. Avoid freeze-thaw cycles.



**Image 1.**