



[Go to Product page](#)

Datasheet for ABIN6747240
anti-PAIP2 antibody (N-Term)

1 Image

Overview

Quantity:	100 µL
Target:	PAIP2
Binding Specificity:	N-Term
Reactivity:	Human, Mouse, Rat, Cow, Dog, Horse, Pig, Rabbit, Monkey, Bat, Chicken
Host:	Rabbit
Clonality:	Polyclonal
Conjugate:	This PAIP2 antibody is un-conjugated
Application:	Western Blotting (WB)

Product Details

Immunogen:	Synthetic peptide from N-Terminus of human PAIP2 (Q9BPZ3, NP_057564). Percent identity by BLAST analysis: Human, Chimpanzee, Gorilla, Orangutan, Gibbon, Monkey, Galago, Marmoset, Mouse, Rat, Elephant, Panda, Dog, Bovine, Bat, Rabbit, Horse, Pig, Opossum, Turkey, Zebra finch, Chicken (100%), Platypus (92%). Type of Immunogen: Synthetic peptide
Specificity:	Human PAIP2
Predicted Reactivity:	Percent identity by BLAST analysis: Human, Mouse, Rat, Dog, Bovine, Chicken (100%).
Purification:	Immunoaffinity purified

Target Details

Target:	PAIP2
Alternative Name:	PAIP2 (PAIP2 Products)
Background:	Name/Gene ID: PAIP2 Synonyms: PAIP2, PABC1-interacting protein 2, PAIP-2, PAIP2A, PABP-interacting protein 2
Gene ID:	51247
NCBI Accession:	NP_057564
UniProt:	Q9BPZ3

Application Details

Application Notes:	Optimal working dilution should be determined by the investigator.
Comment:	Target Species of Antibody: Human
Restrictions:	For Research Use only

Handling

Format:	Lyophilized
Reconstitution:	Distilled water
Concentration:	Lot specific
Buffer:	Lyophilized from PBS with 2 % sucrose
Handling Advice:	Avoid repeat freeze-thaw cycles.
Storage:	4 °C, -20 °C
Storage Comment:	Long term: -20°C, the use of 50% glycerol is recommended if storing aliquots in -20°C for long term use (up to 1 year) Short term (less than 1 week): 4°C. Avoid freeze-thaw cycles.

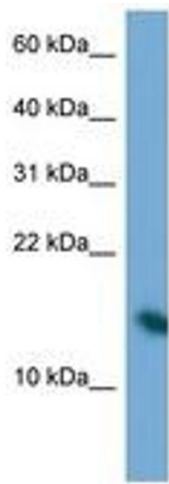


Image 1.