



[Go to Product page](#)

Datasheet for ABIN6747245  
**anti-JMJD8 antibody (AA 170-219)**

1 Image

Overview

Quantity:	100 µL
Target:	JMJD8
Binding Specificity:	AA 170-219
Reactivity:	Human, Mouse, Rat, Cow, Dog, Guinea Pig, Horse, Pig, Bat, Hamster, Monkey
Host:	Rabbit
Clonality:	Polyclonal
Conjugate:	This JMJD8 antibody is un-conjugated
Application:	Western Blotting (WB)

Product Details

Immunogen:	Synthetic peptide located between aa170-219 of mouse Jmjd8 (Q3TA59, NP_082377). Percent identity by BLAST analysis: Human, Gorilla, Gibbon, Monkey, Galago, Marmoset, Mouse, Rat, Hamster, Dog, Bovine, Bat, Horse, Pig (100%), Opossum, Guinea pig (85%).  Type of Immunogen: Synthetic peptide
Specificity:	Mouse JMJD8
Predicted Reactivity:	Percent identity by BLAST analysis: Human, Mouse, Rat, Dog, Bovine, Pig (100%) Guinea pig (85%).
Purification:	Immunoaffinity purified

## Target Details

---

Target: JMJD8

Alternative Name: JMJD8 ([JMJD8 Products](#))

Background: Name/Gene ID: JMJD8

Synonyms: JMJD8, C16orf20, Jumonji domain containing 8, PP14397

Gene ID: 339123

NCBI Accession: [NP\\_082377](#)

UniProt: [Q96S16](#)

## Application Details

---

Application Notes: Optimal working dilution should be determined by the investigator.

Comment: Target Species of Antibody: Mouse

Restrictions: For Research Use only

## Handling

---

Format: Lyophilized

Reconstitution: Distilled water

Concentration: Lot specific

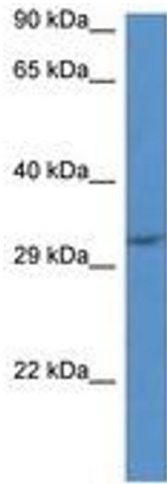
Buffer: Lyophilized from PBS with 2 % sucrose

Handling Advice: Avoid repeat freeze-thaw cycles.

Storage: 4 °C, -20 °C

Storage Comment: Long term: -20°C, the use of 50% glycerol is recommended if storing aliquots in -20°C for long term use (up to 1 year)

Short term (less than 1 week): 4°C. Avoid freeze-thaw cycles.



**Image 1.**