



[Go to Product page](#)

Datasheet for ABIN6747250  
**anti-SRPX antibody (C-Term)**

1 Image

Overview

Quantity:	100 µL
Target:	SRPX
Binding Specificity:	C-Term
Reactivity:	Human, Mouse, Rat, Dog, Horse, Rabbit, Pig, Bat, Chicken, Monkey, Xenopus laevis
Host:	Rabbit
Clonality:	Polyclonal
Conjugate:	This SRPX antibody is un-conjugated
Application:	Western Blotting (WB)

Product Details

Immunogen:	Synthetic peptide from C-Terminus of mouse SrpX (Q9R0M3, NP_058607). Percent identity by BLAST analysis: Human, Gorilla, Gibbon, Monkey, Galago, Marmoset, Mouse, Rat, Dog, Bat, Rabbit, Horse, Pig, Turkey, Zebra finch, Chicken, Xenopus (100%), Bovine, Opossum, Guinea pig, Platypus (92%), Lizard (90%), Elephant (85%), Stickleback (81%).  Type of Immunogen: Synthetic peptide
Specificity:	Mouse SRPX
Predicted Reactivity:	Percent identity by BLAST analysis: Human, Mouse, Rat, Dog, Rabbit, Horse, Pig, Chicken (100%) Bovine, Guinea pig (92%).
Purification:	Immunoaffinity purified

## Target Details

---

Target:	SRPX
Alternative Name:	SRPX ( <a href="#">SRPX Products</a> )
Background:	Name/Gene ID: SRPX  Synonyms: SRPX, DRS, ETX1, SRPX1
Gene ID:	8406
NCBI Accession:	<a href="#">NP_058607</a>
UniProt:	<a href="#">P78539</a>

## Application Details

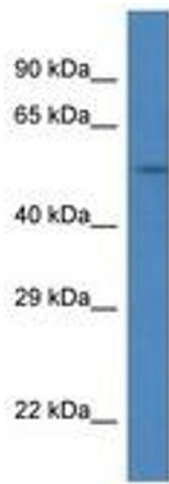
---

Application Notes:	Optimal working dilution should be determined by the investigator.
Comment:	Target Species of Antibody: Mouse
Restrictions:	For Research Use only

## Handling

---

Format:	Lyophilized
Reconstitution:	Distilled water
Concentration:	Lot specific
Buffer:	Lyophilized from PBS with 2 % sucrose
Handling Advice:	Avoid repeat freeze-thaw cycles.
Storage:	4 °C, -20 °C
Storage Comment:	Long term: -20°C, the use of 50% glycerol is recommended if storing aliquots in -20°C for long term use (up to 1 year)  Short term (less than 1 week): 4°C. Avoid freeze-thaw cycles.



**Image 1.**