



[Go to Product page](#)

Datasheet for ABIN6747253
anti-PEN2 antibody (AA 20-69)

1 Image

Overview

Quantity:	100 µL
Target:	PEN2 (PSENEN)
Binding Specificity:	AA 20-69
Reactivity:	Human, Mouse, Dog, Horse, Guinea Pig, Rabbit, Monkey, Pig, Bat
Host:	Rabbit
Clonality:	Polyclonal
Conjugate:	This PEN2 antibody is un-conjugated
Application:	Western Blotting (WB)

Product Details

Immunogen:	Synthetic peptide located between aa20-69 of mouse Psenen (Q9CQR7, NP_079774). Percent identity by BLAST analysis: Human, Gorilla, Gibbon, Monkey, Galago, Marmoset, Mouse, Panda, Dog, Bat, Rabbit, Horse, Pig, Guinea pig (100%), Elephant, Bovine (92%), Rat, Pike, Zebrafish (85%). Type of Immunogen: Synthetic peptide
Specificity:	Mouse PSENEN / PEN2
Predicted Reactivity:	Percent identity by BLAST analysis: Dog (100%).
Purification:	Immunoaffinity purified

Target Details

Target:	PEN2 (PSENEN)
Alternative Name:	PSENEN / PEN-2 (PSENEN Products)
Background:	Name/Gene ID: PSENEN Synonyms: PSENEN, Gamma-secretase subunit PEN-2, MSTP064, Presenilin enhancer protein 2, MDS033, PEN-2, PEN2
Gene ID:	55851
NCBI Accession:	NP_079774
UniProt:	Q9NZ42
Pathways:	Notch Signaling , Neurotrophin Signaling Pathway

Application Details

Application Notes:	Optimal working dilution should be determined by the investigator.
Comment:	Target Species of Antibody: Mouse
Restrictions:	For Research Use only

Handling

Format:	Lyophilized
Reconstitution:	Distilled water
Concentration:	Lot specific
Buffer:	Lyophilized from PBS with 2 % sucrose
Handling Advice:	Avoid repeat freeze-thaw cycles.
Storage:	4 °C,-20 °C
Storage Comment:	Long term: -20°C, the use of 50% glycerol is recommended if storing aliquots in -20°C for long term use (up to 1 year) Short term (less than 1 week): 4°C. Avoid freeze-thaw cycles.

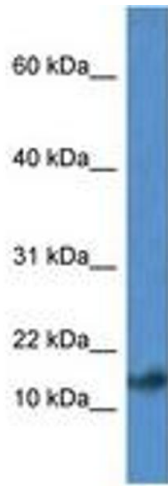


Image 1.