

Datasheet for ABIN6747274
anti-LGI2 antibody (AA 170-219)



[Go to Product page](#)

1 Image

Overview

Quantity:	100 µL
Target:	LGI2
Binding Specificity:	AA 170-219
Reactivity:	Human, Mouse, Rat, Cow, Guinea Pig, Horse, Bat, Monkey
Host:	Rabbit
Clonality:	Polyclonal
Conjugate:	This LGI2 antibody is un-conjugated
Application:	Western Blotting (WB)

Product Details

Immunogen:	Synthetic peptide located between aa170-219 of mouse Lgi2 (Q8K4Z0, NP_659194). Percent identity by BLAST analysis: Human, Chimpanzee, Gorilla, Gibbon, Monkey, Galago, Marmoset, Mouse, Rat, Elephant, Bovine, Bat, Horse, Guinea pig, Platypus (100%), Panda, Dog, Rabbit, Opossum (92%), Turkey, Zebra finch, Chicken (85%). Type of Immunogen: Synthetic peptide
Specificity:	Mouse LGI2
Predicted Reactivity:	Percent identity by BLAST analysis: Human, Rat, Bovine, Horse, Guinea pig (100%) Mouse, Dog, Rabbit (92%) Chicken (85%).
Purification:	Immunoaffinity purified

Target Details

Target:	LGI2
Alternative Name:	LGI2 (LGI2 Products)
Background:	Name/Gene ID: LGI2 Synonyms: LGI2, KIAA1916, LGI1-like protein 2, LGIL2
Gene ID:	55203
NCBI Accession:	NP_659194
UniProt:	Q8N0V4

Application Details

Application Notes:	Optimal working dilution should be determined by the investigator.
Comment:	Target Species of Antibody: Mouse
Restrictions:	For Research Use only

Handling

Format:	Lyophilized
Reconstitution:	Distilled water
Concentration:	Lot specific
Buffer:	Lyophilized from PBS with 2 % sucrose
Handling Advice:	Avoid repeat freeze-thaw cycles.
Storage:	4 °C, -20 °C
Storage Comment:	Long term: -20°C, the use of 50% glycerol is recommended if storing aliquots in -20°C for long term use (up to 1 year) Short term (less than 1 week): 4°C. Avoid freeze-thaw cycles.

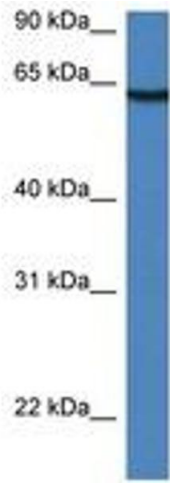


Image 1.