



[Go to Product page](#)

Datasheet for ABIN6747280
anti-CCDC90B antibody (AA 40-89)

1 Image

Overview

Quantity:	100 µL
Target:	CCDC90B
Binding Specificity:	AA 40-89
Reactivity:	Human, Mouse, Rat, Rabbit, Dog, Guinea Pig, Horse, Xenopus laevis, Bat, Hamster, Monkey, Pig
Host:	Rabbit
Clonality:	Polyclonal
Conjugate:	This CCDC90B antibody is un-conjugated
Application:	Western Blotting (WB)

Product Details

Immunogen:	Synthetic peptide located between aa40-89 of mouse Ccdc90b (Q8C3X2, NP_079791). Percent identity by BLAST analysis: Human, Gorilla, Gibbon, Monkey, Galago, Marmoset, Mouse, Rat, Hamster, Elephant, Panda, Dog, Bat, Rabbit, Horse, Pig, Guinea pig, Platypus, Lizard, Xenopus (100%), Bovine, Opossum, Zebra finch, Chicken, Frog, Salmon, Smelt, Stickleback, Zebrafish (92%), Turkey (85%). Type of Immunogen: Synthetic peptide
Specificity:	Mouse CCDC90B
Predicted Reactivity:	Percent identity by BLAST analysis: Human, Rat, Dog, Horse (100%) Bovine, Chicken, Zebrafish (92%).
Purification:	Immunoaffinity purified

Target Details

Target:	CCDC90B
Alternative Name:	CCDC90B (CCDC90B Products)
Background:	Name/Gene ID: CCDC90B Synonyms: CCDC90B, MDS011, MDS025
Gene ID:	60492
NCBI Accession:	NP_079791
UniProt:	Q9GZT6

Application Details

Application Notes:	Optimal working dilution should be determined by the investigator.
Comment:	Target Species of Antibody: Mouse
Restrictions:	For Research Use only

Handling

Format:	Lyophilized
Reconstitution:	Distilled water
Concentration:	Lot specific
Buffer:	Lyophilized from PBS with 2 % sucrose
Handling Advice:	Avoid repeat freeze-thaw cycles.
Storage:	4 °C, -20 °C
Storage Comment:	Long term: -20°C, the use of 50% glycerol is recommended if storing aliquots in -20°C for long term use (up to 1 year) Short term (less than 1 week): 4°C. Avoid freeze-thaw cycles.

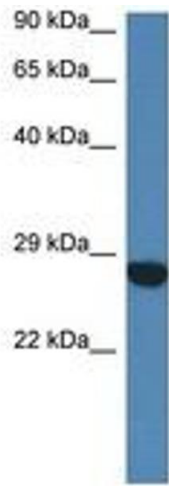


Image 1.