

Datasheet for ABIN6747289
anti-Arylsulfatase B antibody (AA 300-349)



[Go to Product page](#)

1 Image

Overview

Quantity:	100 µL
Target:	Arylsulfatase B (ARSB)
Binding Specificity:	AA 300-349
Reactivity:	Human, Mouse, Cow, Dog, Guinea Pig, Horse, Monkey, Bat
Host:	Rabbit
Clonality:	Polyclonal
Conjugate:	This Arylsulfatase B antibody is un-conjugated
Application:	Western Blotting (WB)

Product Details

Immunogen:	Synthetic peptide located between aa300-349 of mouse Arsb (P50429, NP_033842). Percent identity by BLAST analysis: Human, Gorilla, Gibbon, Monkey, Galago, Marmoset, Mouse, Elephant, Cat, Bat, Horse, Platypus (100%), Rat (92%), Dog, Bovine, Guinea pig (85%). Type of Immunogen: Synthetic peptide
Specificity:	Mouse ARSB
Predicted Reactivity:	Percent identity by BLAST analysis: Human, Horse (100%) Mouse, Rat (92%) Dog, Bovine, Guinea pig (85%).
Purification:	Immunoaffinity purified

Target Details

Target:	Arylsulfatase B (ARSB)
Alternative Name:	ARSB / Arylsulfatase B (ARSB Products)
Background:	Name/Gene ID: ARSB Synonyms: ARSB, Arylsulfatase B, ASB, G4S, MPS6
Gene ID:	411
NCBI Accession:	NP_033842
UniProt:	P15848
Pathways:	Glycosaminoglycan Metabolic Process

Application Details

Application Notes:	Optimal working dilution should be determined by the investigator.
Comment:	Target Species of Antibody: Mouse
Restrictions:	For Research Use only

Handling

Format:	Lyophilized
Reconstitution:	Distilled water
Concentration:	Lot specific
Buffer:	Lyophilized from PBS with 2 % sucrose
Handling Advice:	Avoid repeat freeze-thaw cycles.
Storage:	4 °C,-20 °C
Storage Comment:	Long term: -20°C, the use of 50% glycerol is recommended if storing aliquots in -20°C for long term use (up to 1 year) Short term (less than 1 week): 4°C. Avoid freeze-thaw cycles.

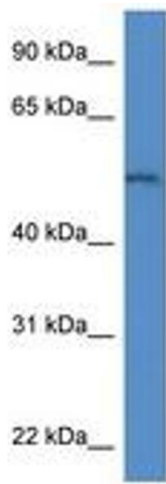


Image 1.