

Datasheet for ABIN6747297
anti-OR2M5 antibody (AA 234-283)



[Go to Product page](#)

1 Image

Overview

Quantity:	100 µL
Target:	OR2M5
Binding Specificity:	AA 234-283
Reactivity:	Human, Dog
Host:	Rabbit
Clonality:	Polyclonal
Conjugate:	This OR2M5 antibody is un-conjugated
Application:	Western Blotting (WB)

Product Details

Immunogen:	Synthetic peptide located between aa234-283 of human OR2M5 (A3KFT3, NP_001004690). Percent identity by BLAST analysis: Human (100%), Panda, Horse (84%). Type of Immunogen: Synthetic peptide
Specificity:	Human OR2M5
Predicted Reactivity:	Percent identity by BLAST analysis: Human (100%).
Purification:	Immunoaffinity purified

Target Details

Target:	OR2M5
Alternative Name:	OR2M5 (OR2M5 Products)

Target Details

Background:	Name/Gene ID: OR2M5
	Synonyms: OR2M5, OR2M5P, Olfactory receptor 2M5
Gene ID:	127059
NCBI Accession:	NP_001004690
UniProt:	A3KFT3

Application Details

Application Notes:	Optimal working dilution should be determined by the investigator.
Comment:	Target Species of Antibody: Human
Restrictions:	For Research Use only

Handling

Format:	Lyophilized
Reconstitution:	Distilled water
Concentration:	Lot specific
Buffer:	Lyophilized from PBS with 2 % sucrose
Handling Advice:	Avoid repeat freeze-thaw cycles.
Storage:	4 °C, -20 °C
Storage Comment:	Long term: -20°C, the use of 50% glycerol is recommended if storing aliquots in -20°C for long term use (up to 1 year) Short term (less than 1 week): 4°C. Avoid freeze-thaw cycles.

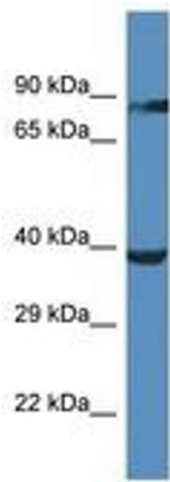


Image 1.