



[Go to Product page](#)

Datasheet for ABIN6747307
anti-XRCC3 antibody (C-Term)

1 Image

Overview

Quantity:	100 µL
Target:	XRCC3
Binding Specificity:	C-Term
Reactivity:	Human, Rabbit, Monkey
Host:	Rabbit
Clonality:	Polyclonal
Conjugate:	This XRCC3 antibody is un-conjugated
Application:	Western Blotting (WB)

Product Details

Immunogen:	Synthetic peptide from C-Terminus of human XRCC3 (O43542, NP_005423). Percent identity by BLAST analysis: Human, Chimpanzee, Gorilla, Gibbon, Monkey (100%), Galago, Panda, Dog (91%), Marmoset (85%), Rabbit (83%). Type of Immunogen: Synthetic peptide
Specificity:	Human XRCC3
Predicted Reactivity:	Percent identity by BLAST analysis: Human (100%) Dog (91%) Rabbit (83%).
Purification:	Immunoaffinity purified

Target Details

Target:	XRCC3
---------	-------

Target Details

Alternative Name:	XRCC3 (XRCC3 Products)
Background:	Name/Gene ID: XRCC3 Synonyms: XRCC3, DNA repair protein XRCC3, CMM6
Gene ID:	7517
NCBI Accession:	NP_005423
UniProt:	O43542
Pathways:	DNA Damage Repair

Application Details

Application Notes:	Optimal working dilution should be determined by the investigator.
Comment:	Target Species of Antibody: Human
Restrictions:	For Research Use only

Handling

Format:	Lyophilized
Reconstitution:	Distilled water
Concentration:	Lot specific
Buffer:	Lyophilized from PBS with 2 % sucrose
Handling Advice:	Avoid repeat freeze-thaw cycles.
Storage:	4 °C, -20 °C
Storage Comment:	Long term: -20°C, the use of 50% glycerol is recommended if storing aliquots in -20°C for long term use (up to 1 year) Short term (less than 1 week): 4°C. Avoid freeze-thaw cycles.

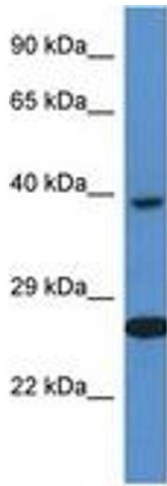


Image 1.