



[Go to Product page](#)

Datasheet for ABIN6747310
anti-RAB2A antibody (C-Term)

1 Image

Overview

Quantity:	100 µL
Target:	RAB2A
Binding Specificity:	C-Term
Reactivity:	Human, Mouse, Rat, Dog, Rabbit, Horse, Monkey
Host:	Rabbit
Clonality:	Polyclonal
Conjugate:	This RAB2A antibody is un-conjugated
Application:	Western Blotting (WB)

Product Details

Immunogen:	Synthetic peptide from C-Terminus of human RAB2A (P61019, NP_002856). Percent identity by BLAST analysis: Human, Chimpanzee, Orangutan, Gibbon, Monkey, Marmoset, Rat, Dog, Rabbit, Horse (100%), Galago, Elephant, Bovine, Bat, Pig, Opossum, Guinea pig, Turkey, Zebra finch, Chicken, Platypus (92%), Lizard (85%), Mouse (84%). Type of Immunogen: Synthetic peptide
Specificity:	Human RAB2A / RAB2
Predicted Reactivity:	Percent identity by BLAST analysis: Human, Dog, Rabbit (100%) Rat, Bovine, Pig, Guinea pig, Chicken (92%) Mouse (84%).
Purification:	Immunoaffinity purified

Target Details

Target:	RAB2A
Alternative Name:	RAB2A / RAB2 (RAB2A Products)
Background:	Name/Gene ID: RAB2A Subfamily: RAS oncogene Family: Ras GTPase superfamily IPR001806 Synonyms: RAB2A, Ras-related protein rab-2, RAB2, LHX, Ras-related protein Rab-2A
Gene ID:	5862
NCBI Accession:	NP_002856
UniProt:	P61019
Pathways:	SARS-CoV-2 Protein Interactome

Application Details

Application Notes:	Optimal working dilution should be determined by the investigator.
Comment:	Target Species of Antibody: Human
Restrictions:	For Research Use only

Handling

Format:	Lyophilized
Reconstitution:	Distilled water
Concentration:	Lot specific
Buffer:	Lyophilized from PBS with 2 % sucrose
Handling Advice:	Avoid repeat freeze-thaw cycles.
Storage:	4 °C, -20 °C
Storage Comment:	Long term: -20°C, the use of 50% glycerol is recommended if storing aliquots in -20°C for long term use (up to 1 year) Short term (less than 1 week): 4°C. Avoid freeze-thaw cycles.

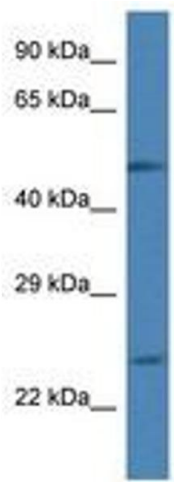


Image 1.