

Datasheet for ABIN6747317
anti-DLX6 antibody (C-Term)



[Go to Product page](#)

1 Image

Overview

Quantity:	100 µL
Target:	DLX6
Binding Specificity:	C-Term
Reactivity:	Human, Mouse, Rat, Dog, Rabbit, Cow, Guinea Pig, Horse, Bat, Chicken, Monkey
Host:	Rabbit
Clonality:	Polyclonal
Conjugate:	This DLX6 antibody is un-conjugated
Application:	Western Blotting (WB)

Product Details

Immunogen:	Synthetic peptide from C-Terminus of rat Dlx6. Percent identity by BLAST analysis: Human, Chimpanzee, Gorilla, Orangutan, Gibbon, Monkey, Galago, Marmoset, Tamarin, Mouse, Rat, Elephant, Panda, Dog, Bovine, Bat, Rabbit, Horse, Guinea pig, Turkey, Zebra finch, Chicken, Platypus (100%), Lizard, Stickleback, Zebrafish (92%), Xenopus (85%). Type of Immunogen: Synthetic peptide
Specificity:	Rat DLX6
Predicted Reactivity:	Percent identity by BLAST analysis: Human, Mouse, Dog, Bovine, Rabbit, Guinea pig, Chicken (100%) Zebrafish (92%) Xenopus (85%).
Purification:	Immunoaffinity purified

Target Details

Target:	DLX6
Alternative Name:	DLX6 (DLX6 Products)
Background:	Name/Gene ID: DLX6 Synonyms: DLX6, Distal-less homeo box 6, Distal-less homeobox 6, Homeobox protein DLX-6
Gene ID:	1750

Application Details

Application Notes:	Optimal working dilution should be determined by the investigator.
Comment:	Target Species of Antibody: Rat
Restrictions:	For Research Use only

Handling

Format:	Lyophilized
Reconstitution:	Distilled water
Concentration:	Lot specific
Buffer:	Lyophilized from PBS with 2 % sucrose
Handling Advice:	Avoid repeat freeze-thaw cycles.
Storage:	4 °C, -20 °C
Storage Comment:	Long term: -20°C, the use of 50% glycerol is recommended if storing aliquots in -20°C for long term use (up to 1 year) Short term (less than 1 week): 4°C. Avoid freeze-thaw cycles.

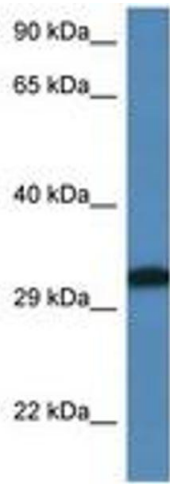


Image 1.