



[Go to Product page](#)

Datasheet for ABIN6747318  
**anti-OLIG3 antibody (AA 62-111)**

1 Image

### Overview

Quantity:	100 µL
Target:	OLIG3
Binding Specificity:	AA 62-111
Reactivity:	Human, Mouse, Rat, Dog, Cow, Guinea Pig, Horse, Rabbit, Bat, Hamster, Monkey, Pig, Xenopus laevis
Host:	Rabbit
Clonality:	Polyclonal
Conjugate:	This OLIG3 antibody is un-conjugated
Application:	Western Blotting (WB)

### Product Details

Immunogen:	Synthetic peptide located between aa62-111 of rat Olig3 (D4A572, NP_001099739). Percent identity by BLAST analysis: Human, Chimpanzee, Gorilla, Gibbon, Monkey, Galago, Mouse, Rat, Hamster, Elephant, Panda, Dog, Bovine, Bat, Rabbit, Pig, Opossum, Guinea pig, Xenopus (100%), Zebra finch, Platypus (92%), Horse (85%), Chicken (84%).  Type of Immunogen: Synthetic peptide
Specificity:	Rat OLIG3
Predicted Reactivity:	Percent identity by BLAST analysis: Human, Mouse, Rat, Dog, Bovine, Rabbit (100%) Horse (85%).
Purification:	Immunoaffinity purified

## Target Details

---

Target:	OLIG3
Alternative Name:	OLIG3 ( <a href="#">OLIG3 Products</a> )
Background:	Name/Gene ID: OLIG3  Synonyms: OLIG3, Bhlhb7, BHLHe20, Oligo3
Gene ID:	167826
NCBI Accession:	<a href="#">NP_001099739</a>
UniProt:	<a href="#">Q7RTU3</a>

## Application Details

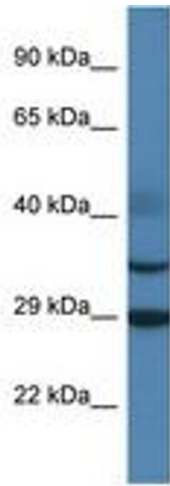
---

Application Notes:	Optimal working dilution should be determined by the investigator.
Comment:	Target Species of Antibody: Rat
Restrictions:	For Research Use only

## Handling

---

Format:	Lyophilized
Reconstitution:	Distilled water
Concentration:	Lot specific
Buffer:	Lyophilized from PBS with 2 % sucrose
Handling Advice:	Avoid repeat freeze-thaw cycles.
Storage:	4 °C, -20 °C
Storage Comment:	Long term: -20°C, the use of 50% glycerol is recommended if storing aliquots in -20°C for long term use (up to 1 year)  Short term (less than 1 week): 4°C. Avoid freeze-thaw cycles.



**Image 1.**