



Datasheet for ABIN6747319
anti-DHX38 antibody (AA 240-289)



[Go to Product page](#)

1 Image

Overview

Quantity:	100 µL
Target:	DHX38
Binding Specificity:	AA 240-289
Reactivity:	Human, Mouse, Rat, Cow, Dog, Horse, Guinea Pig, Rabbit, Zebrafish (Danio rerio), Bat, Hamster, Monkey
Host:	Rabbit
Clonality:	Polyclonal
Conjugate:	This DHX38 antibody is un-conjugated
Application:	Western Blotting (WB)

Product Details

Immunogen:	Synthetic peptide located between aa240-289 of rat Dhx38 (NP_001099655). Percent identity by BLAST analysis: Human, Gorilla, Orangutan, Gibbon, Monkey, Galago, Mouse, Rat, Hamster, Panda, Dog, Bovine, Bat, Rabbit, Horse, Guinea pig (100%), Elephant, Turkey, Chicken, Platypus, Stickleback (92%), Opossum (85%), Zebrafish (84%), Sea squirt (83%). Type of Immunogen: Synthetic peptide
Specificity:	Rat DHX38
Predicted Reactivity:	Percent identity by BLAST analysis: Mouse, Rat, Dog, Rabbit, Guinea pig (100%) Chicken (92%) Zebrafish (84%).
Purification:	Immunoaffinity purified

Target Details

Target:	DHX38
Alternative Name:	DHX38 (DHX38 Products)
Background:	Name/Gene ID: DHX38 Synonyms: DHX38, DDX38, HPrp16, PRP16, PRP16 homolog of S.cerevisiae, PRPF16, DEAH box protein 38, KIAA0224
Gene ID:	9785
NCBI Accession:	NP_001099655
UniProt:	Q92620

Application Details

Application Notes:	Optimal working dilution should be determined by the investigator.
Comment:	Target Species of Antibody: Rat
Restrictions:	For Research Use only

Handling

Format:	Lyophilized
Reconstitution:	Distilled water
Concentration:	Lot specific
Buffer:	Lyophilized from PBS with 2 % sucrose
Handling Advice:	Avoid repeat freeze-thaw cycles.
Storage:	4 °C,-20 °C
Storage Comment:	Long term: -20°C, the use of 50% glycerol is recommended if storing aliquots in -20°C for long term use (up to 1 year) Short term (less than 1 week): 4°C. Avoid freeze-thaw cycles.

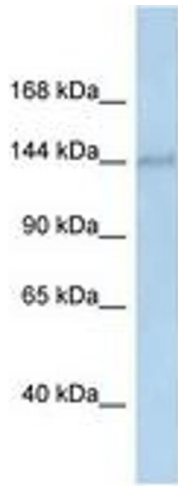


Image 1.