



[Go to Product page](#)

Datasheet for ABIN6747331

anti-Cathepsin L2 antibody (AA 181-230)

1 Image

Overview

Quantity:	100 µL
Target:	Cathepsin L2 (CTSL2)
Binding Specificity:	AA 181-230
Reactivity:	Human
Host:	Rabbit
Clonality:	Polyclonal
Conjugate:	This Cathepsin L2 antibody is un-conjugated
Application:	Western Blotting (WB)

Product Details

Immunogen:	Synthetic peptide located between aa181-230 of human CTSV (O60911, NP_001324). Percent identity by BLAST analysis: Human, Gorilla, Gibbon, Cat (100%), Monkey, Marmoset (92%), Rabbit (85%), Mouse, Rat (78%). Type of Immunogen: Synthetic peptide
Specificity:	Human CTSL2 / Cathepsin V
Predicted Reactivity:	Percent identity by BLAST analysis: Human (100%).
Purification:	Immunoaffinity purified

Target Details

Target:	Cathepsin L2 (CTSL2)
---------	----------------------

Target Details

Alternative Name:	CTSV / Cathepsin V (CTSL2 Products)
Background:	Name/Gene ID: CTSV Subfamily: Cysteine C1 Family: Protease Synonyms: CTSV, Cathepsin L2, Cathepsin L2, preproprotein, Cathepsin V, Cathepsin U, CTSU, CATL2, CTSL2
Gene ID:	1515
NCBI Accession:	NP_001324
UniProt:	O60911
Pathways:	Toll-Like Receptors Cascades

Application Details

Application Notes:	Optimal working dilution should be determined by the investigator.
Comment:	Target Species of Antibody: Human
Restrictions:	For Research Use only

Handling

Format:	Lyophilized
Reconstitution:	Distilled water
Concentration:	Lot specific
Buffer:	Lyophilized from PBS with 2 % sucrose
Handling Advice:	Avoid repeat freeze-thaw cycles.
Storage:	4 °C, -20 °C
Storage Comment:	Long term: -20°C, the use of 50% glycerol is recommended if storing aliquots in -20°C for long term use (up to 1 year) Short term (less than 1 week): 4°C. Avoid freeze-thaw cycles.

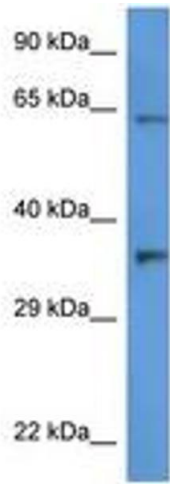


Image 1.