



[Go to Product page](#)

Datasheet for ABIN6747362

anti-MRPS31 antibody (AA 34-83)

1 Image

Overview

| | |
|----------------------|---------------------------------------|
| Quantity: | 100 µL |
| Target: | MRPS31 |
| Binding Specificity: | AA 34-83 |
| Reactivity: | Human |
| Host: | Rabbit |
| Clonality: | Polyclonal |
| Conjugate: | This MRPS31 antibody is un-conjugated |
| Application: | Western Blotting (WB) |

Product Details

Immunogen: Synthetic peptide located between aa34-83 of human MRPS31 (Q92665, NP_005821). Percent identity by BLAST analysis: Human (100%), Gorilla, Gibbon (92%), Monkey (85%).

Type of Immunogen: Synthetic peptide

Specificity: Human MRPS31

Predicted Reactivity: Percent identity by BLAST analysis:

Purification: Immunoaffinity purified

Target Details

Target: MRPS31

Alternative Name: MRPS31 ([MRPS31 Products](#))

Target Details

| | |
|-----------------|----------------------------------------------------------------------------------|
| Background: | Name/Gene ID: MRPS31 Synonyms: MRPS31, Imogen 38, MRP-S31, IMOGN38, S31mt |
| Gene ID: | 10240 |
| NCBI Accession: | NP_005821 |

Application Details

| | |
|--------------------|--------------------------------------------------------------------|
| Application Notes: | Optimal working dilution should be determined by the investigator. |
| Comment: | Target Species of Antibody: Human |
| Restrictions: | For Research Use only |

Handling

| | |
|------------------|-----------------------------------------------------------------------------------------------------------------------------------------------------------------------------------------|
| Format: | Lyophilized |
| Reconstitution: | Distilled water |
| Concentration: | Lot specific |
| Buffer: | Lyophilized from PBS with 2 % sucrose |
| Handling Advice: | Avoid repeat freeze-thaw cycles. |
| Storage: | 4 °C,-20 °C |
| Storage Comment: | Long term: -20°C, the use of 50% glycerol is recommended if storing aliquots in -20°C for long term use (up to 1 year) Short term (less than 1 week): 4°C. Avoid freeze-thaw cycles. |

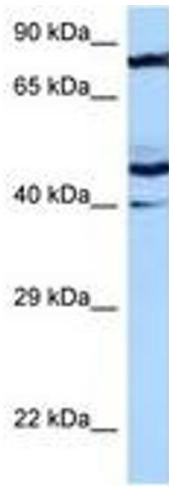


Image 1.