



[Go to Product page](#)

Datasheet for ABIN6747373  
**anti-TFPI antibody (AA 119-168)**

1 Image

Overview

Quantity:	100 µL
Target:	TFPI
Binding Specificity:	AA 119-168
Reactivity:	Human, Rat, Guinea Pig, Cow
Host:	Rabbit
Clonality:	Polyclonal
Conjugate:	This TFPI antibody is un-conjugated
Application:	Western Blotting (WB)

Product Details

Immunogen:	Synthetic peptide located between aa119-168 of human TFPI (P10646, NP_006278). Percent identity by BLAST analysis: Human, Gorilla, Orangutan, Gibbon, Marmoset (100%), Monkey, Galago, Mouse, Rabbit, Horse, Pig (92%), Rat, Elephant, Bovine, Platypus (85%).  Type of Immunogen: Synthetic peptide
Specificity:	Human TFPI
Predicted Reactivity:	Percent identity by BLAST analysis: Human (100%) Mouse, Rabbit, Horse, Pig (92%) Rat, Bovine (85%).
Purification:	Immunoaffinity purified

## Target Details

---

Target:	TFPI
Alternative Name:	TFPI /LACI ( <a href="#">TFPI Products</a> )
Background:	Name/Gene ID: TFPI  Synonyms: TFPI, Anti-converтин, Extrinsic pathway inhibitor, EPI, LACI, TFI, TFPI1
Gene ID:	7035
NCBI Accession:	<a href="#">NP_006278</a>
UniProt:	<a href="#">P10646</a>

## Application Details

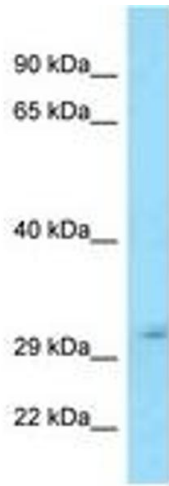
---

Application Notes:	Optimal working dilution should be determined by the investigator.
Comment:	Target Species of Antibody: Human
Restrictions:	For Research Use only

## Handling

---

Format:	Lyophilized
Reconstitution:	Distilled water
Concentration:	Lot specific
Buffer:	Lyophilized from PBS with 2 % sucrose
Handling Advice:	Avoid repeat freeze-thaw cycles.
Storage:	4 °C, -20 °C
Storage Comment:	Long term: -20°C, the use of 50% glycerol is recommended if storing aliquots in -20°C for long term use (up to 1 year) Short term (less than 1 week): 4°C. Avoid freeze-thaw cycles.



**Image 1.**