



[Go to Product page](#)

Datasheet for ABIN6747374
anti-AADACL3 antibody (AA 31-80)

1 Image

Overview

Quantity:	100 µL
Target:	AADACL3
Binding Specificity:	AA 31-80
Reactivity:	Human
Host:	Rabbit
Clonality:	Polyclonal
Conjugate:	This AADACL3 antibody is un-conjugated
Application:	Western Blotting (WB)

Product Details

Immunogen:	Synthetic peptide located between aa31-80 of human AADACL3 (Q5VUY0, NP_001096640). Percent identity by BLAST analysis: Human (100%), Gibbon (92%), Gorilla, Monkey, Marmoset (85%). Type of Immunogen: Synthetic peptide
Specificity:	Human AADACL3
Predicted Reactivity:	Percent identity by BLAST analysis:
Purification:	Immunoaffinity purified

Target Details

Target:	AADACL3
---------	---------

Target Details

Alternative Name:	AADACL3 (AADACL3 Products)
Background:	Name/Gene ID: AADACL3 Synonyms: AADACL3, RP11-474021.3, OTTHUMG00000001887
Gene ID:	126767
NCBI Accession:	NP_001096640
UniProt:	Q5VUY0

Application Details

Application Notes:	Optimal working dilution should be determined by the investigator.
Comment:	Target Species of Antibody: Human
Restrictions:	For Research Use only

Handling

Format:	Lyophilized
Reconstitution:	Distilled water
Concentration:	Lot specific
Buffer:	Lyophilized from PBS with 2 % sucrose
Handling Advice:	Avoid repeat freeze-thaw cycles.
Storage:	4 °C,-20 °C
Storage Comment:	Long term: -20°C, the use of 50% glycerol is recommended if storing aliquots in -20°C for long term use (up to 1 year) Short term (less than 1 week): 4°C. Avoid freeze-thaw cycles.

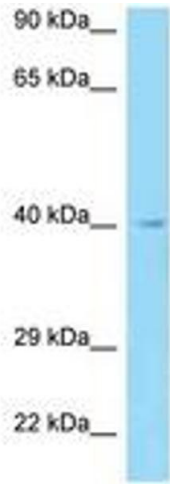


Image 1.