

Datasheet for ABIN6747382  
**anti-PRRG3 antibody (N-Term)**



[Go to Product page](#)

1 Image

## Overview

Quantity:	100 µL
Target:	PRRG3
Binding Specificity:	N-Term
Reactivity:	Human, Mouse, Rat, Cow, Monkey
Host:	Rabbit
Clonality:	Polyclonal
Conjugate:	This PRRG3 antibody is un-conjugated
Application:	Western Blotting (WB)

## Product Details

Immunogen:	Synthetic peptide from N-Terminus of mouse Prrg3 (Q6PAQ9, NP_001074604). Percent identity by BLAST analysis: Human, Gorilla, Gibbon, Monkey, Marmoset, Mouse (100%), Galago, Dog, Bat, Horse, Guinea pig (92%), Platypus (91%), Rat, Bovine (85%), Turkey, Zebra finch, Chicken (84%), Orangutan, Hamster, Elephant, Panda, Rabbit, Opossum, Lizard, Frog (83%).  Type of Immunogen: Synthetic peptide
Specificity:	Mouse PRRG3
Predicted Reactivity:	Percent identity by BLAST analysis: Human (100%) Dog, Horse, Guinea pig (92%) Rat, Bovine (85%) Chicken (84%).
Purification:	Immunoaffinity purified

## Target Details

---

Target:	PRRG3
Alternative Name:	PRRG3 / TMG3 ( <a href="#">PRRG3 Products</a> )
Background:	Name/Gene ID: PRRG3  Synonyms: PRRG3, PRGP3, Proline-rich Gla protein 3, TMG3
Gene ID:	79057
NCBI Accession:	<a href="#">NP_001074604</a>
UniProt:	<a href="#">Q9BZD7</a>

## Application Details

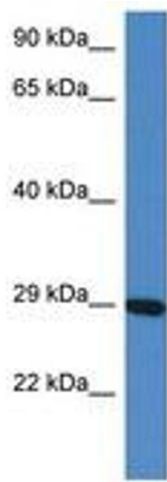
---

Application Notes:	Optimal working dilution should be determined by the investigator.
Comment:	Target Species of Antibody: Mouse
Restrictions:	For Research Use only

## Handling

---

Format:	Lyophilized
Reconstitution:	Distilled water
Concentration:	Lot specific
Buffer:	Lyophilized from PBS with 2 % sucrose
Handling Advice:	Avoid repeat freeze-thaw cycles.
Storage:	4 °C, -20 °C
Storage Comment:	Long term: -20°C, the use of 50% glycerol is recommended if storing aliquots in -20°C for long term use (up to 1 year)  Short term (less than 1 week): 4°C. Avoid freeze-thaw cycles.



**Image 1.**