



[Go to Product page](#)

Datasheet for ABIN6747384
anti-ABRA antibody (AA 284-333)

1 Image

Overview

Quantity:	100 µL
Target:	ABRA
Binding Specificity:	AA 284-333
Reactivity:	Human, Mouse, Rat, Cow, Dog, Horse, Pig, Rabbit, Bat, Hamster, Monkey
Host:	Rabbit
Clonality:	Polyclonal
Conjugate:	This ABRA antibody is un-conjugated
Application:	Western Blotting (WB)

Product Details

Immunogen:	Synthetic peptide located between aa284-333 of mouse Abra (Q8BUZ1, NP_780665). Percent identity by BLAST analysis: Human, Gorilla, Gibbon, Monkey, Galago, Marmoset, Mouse, Rat, Hamster, Elephant, Panda, Dog, Bovine, Bat, Rabbit, Horse, Pig, Opossum (100%), Turkey, Zebra finch, Chicken, Platypus, Lizard, Zebrafish (92%), Xenopus (84%). Type of Immunogen: Synthetic peptide
Specificity:	Mouse ABRA
Predicted Reactivity:	Percent identity by BLAST analysis: Human, Mouse, Rat, Bovine, Rabbit, Horse, Pig (100%) Chicken, Zebrafish (92%).
Purification:	Immunoaffinity purified

Target Details

Target:	ABRA
Alternative Name:	STARS / ABRA (ABRA Products)
Background:	Name/Gene ID: ABRA Synonyms: ABRA, STARS
Gene ID:	137735
NCBI Accession:	NP_780665
UniProt:	Q8N0Z2
Pathways:	Protein targeting to Nucleus

Application Details

Application Notes:	Optimal working dilution should be determined by the investigator.
Comment:	Target Species of Antibody: Mouse
Restrictions:	For Research Use only

Handling

Format:	Lyophilized
Reconstitution:	Distilled water
Concentration:	Lot specific
Buffer:	Lyophilized from PBS with 2 % sucrose
Handling Advice:	Avoid repeat freeze-thaw cycles.
Storage:	4 °C,-20 °C
Storage Comment:	Long term: -20°C, the use of 50% glycerol is recommended if storing aliquots in -20°C for long term use (up to 1 year) Short term (less than 1 week): 4°C. Avoid freeze-thaw cycles.

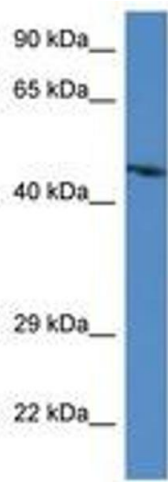


Image 1.