



[Go to Product page](#)

Datasheet for ABIN6747390

anti-Myopalladin antibody (AA 972-1021)

1 Image

Overview

Quantity:	100 µL
Target:	Myopalladin (MYPN)
Binding Specificity:	AA 972-1021
Reactivity:	Human, Mouse, Rat, Rabbit, Cow, Dog, Bat, Hamster, Monkey
Host:	Rabbit
Clonality:	Polyclonal
Conjugate:	This Myopalladin antibody is un-conjugated
Application:	Western Blotting (WB)

Product Details

Immunogen:	Synthetic peptide located between aa972-1021 of human MYPN (Q86TC9, NP_115967). Percent identity by BLAST analysis: Human, Chimpanzee, Gorilla, Gibbon, Monkey, Galago, Marmoset, Mouse, Rat, Hamster, Panda, Dog, Bovine, Bat, Rabbit (100%), Horse, Opossum, Guinea pig (92%), Zebra finch, Xenopus, Stickleback (91%), Elephant (85%), Turkey, Chicken (83%). Type of Immunogen: Synthetic peptide
Specificity:	Human MYPN
Predicted Reactivity:	Percent identity by BLAST analysis: Human, Mouse, Rat, Dog, Bovine (100%) Horse, Guinea pig (92%).
Purification:	Immunoaffinity purified

Target Details

Target: Myopalladin (MYPN)

Alternative Name: MYPN ([MYPN Products](#))

Background: Name/Gene ID: MYPN

Synonyms: MYPN, 145 kDa sarcomeric protein, Myopalladin, MYOP

Gene ID: 84665

NCBI Accession: [NP_115967](#)

UniProt: [Q86TC9](#)

Application Details

Application Notes: Optimal working dilution should be determined by the investigator.

Comment: Target Species of Antibody: Human

Restrictions: For Research Use only

Handling

Format: Lyophilized

Reconstitution: Distilled water

Concentration: Lot specific

Buffer: Lyophilized from PBS with 2 % sucrose

Handling Advice: Avoid repeat freeze-thaw cycles.

Storage: 4 °C, -20 °C

Storage Comment: Long term: -20°C, the use of 50% glycerol is recommended if storing aliquots in -20°C for long term use (up to 1 year)

Short term (less than 1 week): 4°C. Avoid freeze-thaw cycles.

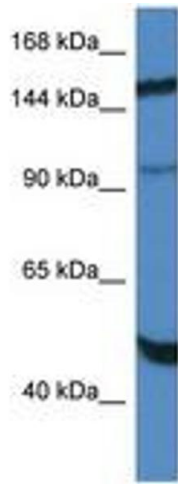


Image 1.