



[Go to Product page](#)

Datasheet for ABIN6747393

anti-UQCRC1 antibody (AA 143-192)

1 Image

Overview

Quantity:	100 µL
Target:	UQCRC1
Binding Specificity:	AA 143-192
Reactivity:	Human, Mouse, Rat, Monkey, Dog, Rabbit, Guinea Pig, Cow, Horse, Pig, Bat, Xenopus laevis
Host:	Rabbit
Clonality:	Polyclonal
Conjugate:	This UQCRC1 antibody is un-conjugated
Application:	Western Blotting (WB)

Product Details

Immunogen:	Synthetic peptide located between aa143-192 of human UQCRC1 (P31930, NP_003356). Percent identity by BLAST analysis: Human, Chimpanzee, Gorilla, Gibbon, Galago, Marmoset, Mouse, Rat, Elephant, Panda, Dog, Bovine, Bat, Horse, Pig, Guinea pig, Platypus, Xenopus (100%), Opossum (92%), Rabbit, Lizard (85%). Type of Immunogen: Synthetic peptide
Specificity:	Human UQCRC1
Predicted Reactivity:	Percent identity by BLAST analysis: Mouse, Dog, Bovine (100%) Xenopus (92%) Rabbit (85%).
Purification:	Immunoaffinity purified

Target Details

Target:	UQCRC1
Alternative Name:	UQCRC1 (UQCRC1 Products)
Background:	Name/Gene ID: UQCRC1 Subfamily: Metallopeptidase M16 Family: Protease Synonyms: UQCRC1, Complex III subunit 1, D3S3191, Core protein I, QCR1, UQCR1
Gene ID:	7384
NCBI Accession:	NP_003356
UniProt:	P31930

Application Details

Application Notes:	Optimal working dilution should be determined by the investigator.
Comment:	Target Species of Antibody: Human
Restrictions:	For Research Use only

Handling

Format:	Lyophilized
Reconstitution:	Distilled water
Concentration:	Lot specific
Buffer:	Lyophilized from PBS with 2 % sucrose
Handling Advice:	Avoid repeat freeze-thaw cycles.
Storage:	4 °C,-20 °C
Storage Comment:	Long term: -20°C, the use of 50% glycerol is recommended if storing aliquots in -20°C for long term use (up to 1 year) Short term (less than 1 week): 4°C. Avoid freeze-thaw cycles.

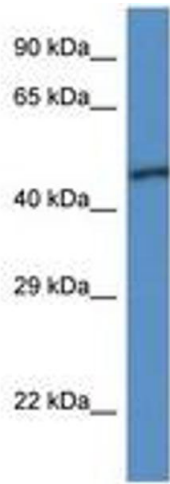


Image 1.