



[Go to Product page](#)

Datasheet for ABIN6747400
anti-SRPK1 antibody (AA 399-448)

1 Image

Overview

Quantity:	100 µL
Target:	SRPK1
Binding Specificity:	AA 399-448
Reactivity:	Human, Guinea Pig, Rabbit, Dog, Pig, Cow, Monkey
Host:	Rabbit
Clonality:	Polyclonal
Conjugate:	This SRPK1 antibody is un-conjugated
Application:	Western Blotting (WB)

Product Details

Immunogen:	Synthetic peptide located between aa399-448 of human SRPK1 (Q96SB4, NP_003128). Percent identity by BLAST analysis: Human, Chimpanzee, Gorilla, Orangutan, Monkey, Galago, Marmoset, Dog, Bovine, Rabbit, Pig, Guinea pig (100%), Gibbon, Elephant, Bat, Horse (92%). Type of Immunogen: Synthetic peptide
Specificity:	Human SRPK1
Predicted Reactivity:	Percent identity by BLAST analysis: Human, Dog, Bovine, Rabbit, Pig, Guinea pig (100%) Horse (92%).
Purification:	Immunoaffinity purified

Target Details

Target:	SRPK1
Alternative Name:	SRPK1 (SRPK1 Products)
Background:	Name/Gene ID: SRPK1 Subfamily: SRPK Family: Protein Kinase Synonyms: SRPK1, SFRS protein kinase 1, SFRSK1, SR-protein-specific kinase 1, SRSF protein kinase 1
Gene ID:	6732
NCBI Accession:	NP_003128
UniProt:	Q96SB4
Pathways:	Toll-Like Receptors Cascades

Application Details

Application Notes:	Optimal working dilution should be determined by the investigator.
Comment:	Target Species of Antibody: Human
Restrictions:	For Research Use only

Handling

Format:	Lyophilized
Reconstitution:	Distilled water
Concentration:	Lot specific
Buffer:	Lyophilized from PBS with 2 % sucrose
Handling Advice:	Avoid repeat freeze-thaw cycles.
Storage:	4 °C,-20 °C
Storage Comment:	Long term: -20°C, the use of 50% glycerol is recommended if storing aliquots in -20°C for long term use (up to 1 year) Short term (less than 1 week): 4°C. Avoid freeze-thaw cycles.

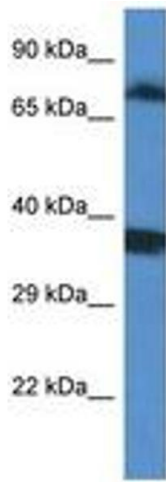


Image 1.