



[Go to Product page](#)

Datasheet for ABIN6747405
anti-RPL14 antibody (C-Term)

1 Image

Overview

Quantity:	100 µL
Target:	RPL14
Binding Specificity:	C-Term
Reactivity:	Human, Rat, Mouse, Dog, Guinea Pig, Monkey, Pig
Host:	Rabbit
Clonality:	Polyclonal
Conjugate:	This RPL14 antibody is un-conjugated
Application:	Western Blotting (WB)

Product Details

Immunogen:	Synthetic peptide from C-Terminus of human RPL14 (P50914, NP_003964). Percent identity by BLAST analysis: Human, Chimpanzee, Gorilla, Gibbon, Monkey, Galago, Panda, Dog, Guinea pig (100%), Elephant, Bat, Rabbit (92%), Marmoset, Bovine, Pig (85%), Mouse, Rat (84%). Type of Immunogen: Synthetic peptide
Specificity:	Human RPL14
Predicted Reactivity:	Percent identity by BLAST analysis: Human, Dog, Guinea pig (100%) Pig (85%) Mouse, Rat (84%).
Purification:	Immunoaffinity purified

Target Details

Target:	RPL14
Alternative Name:	RPL14 (RPL14 Products)
Background:	Name/Gene ID: RPL14 Synonyms: RPL14, 60S ribosomal protein L14, CAG-ISL 7, HRL14, MMRPL32, Ribosomal protein L14, RL14, CAG-ISL-7, CTG-B33, L14
Gene ID:	9045
NCBI Accession:	NP_003964
UniProt:	P50914

Application Details

Application Notes:	Optimal working dilution should be determined by the investigator.
Comment:	Target Species of Antibody: Human
Restrictions:	For Research Use only

Handling

Format:	Lyophilized
Reconstitution:	Distilled water
Concentration:	Lot specific
Buffer:	Lyophilized from PBS with 2 % sucrose
Handling Advice:	Avoid repeat freeze-thaw cycles.
Storage:	4 °C,-20 °C
Storage Comment:	Long term: -20°C, the use of 50% glycerol is recommended if storing aliquots in -20°C for long term use (up to 1 year) Short term (less than 1 week): 4°C. Avoid freeze-thaw cycles.

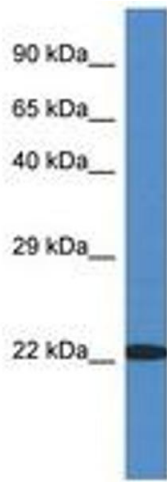


Image 1.