

Datasheet for ABIN6747414
anti-ONECUT1 antibody (AA 370-419)



[Go to Product page](#)

1 Image

Overview

Quantity:	100 µL
Target:	ONECUT1
Binding Specificity:	AA 370-419
Reactivity:	Human, Mouse, Rat, Dog, Rabbit, Cow, Pig, Guinea Pig, Horse, Zebrafish (Danio rerio), Bat, Monkey, Xenopus laevis, Chicken
Host:	Rabbit
Clonality:	Polyclonal
Conjugate:	This ONECUT1 antibody is un-conjugated
Application:	Western Blotting (WB)

Product Details

Immunogen:	Synthetic peptide located between aa370-419 of mouse Onecut1 (O08755, NP_032288). Percent identity by BLAST analysis: Human, Chimpanzee, Gorilla, Gibbon, Monkey, Galago, Marmoset, Mouse, Rat, Elephant, Dog, Bovine, Bat, Rabbit, Horse, Pig, Opossum, Guinea pig, Turkey, Zebra finch, Chicken, Platypus, Xenopus (100%). Type of Immunogen: Synthetic peptide
Specificity:	Mouse ONECUT1
Predicted Reactivity:	Percent identity by BLAST analysis: Human, Mouse, Rat, Dog, Bovine, Rabbit, Pig, Guinea pig, Chicken (100%).
Purification:	Immunoaffinity purified

Target Details

Target:	ONECUT1
Alternative Name:	ONECUT1 / HNF6 (ONECUT1 Products)
Background:	Name/Gene ID: ONECUT1 Synonyms: ONECUT1, Hepatocyte nuclear factor 6, HNF6, One cut domain family member 1, One cut homeobox 1, HNF-6, HNF6A
Gene ID:	3175
NCBI Accession:	NP_032288
UniProt:	Q9UBC0

Application Details

Application Notes:	Optimal working dilution should be determined by the investigator.
Comment:	Target Species of Antibody: Mouse
Restrictions:	For Research Use only

Handling

Format:	Lyophilized
Reconstitution:	Distilled water
Concentration:	Lot specific
Buffer:	Lyophilized from PBS with 2 % sucrose
Handling Advice:	Avoid repeat freeze-thaw cycles.
Storage:	4 °C,-20 °C
Storage Comment:	Long term: -20°C, the use of 50% glycerol is recommended if storing aliquots in -20°C for long term use (up to 1 year) Short term (less than 1 week): 4°C. Avoid freeze-thaw cycles.

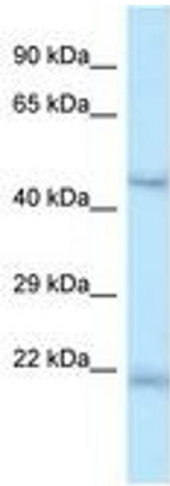


Image 1.