



[Go to Product page](#)

Datasheet for ABIN6747433
anti-KLHL12 antibody (N-Term)

1 Image

Overview

Quantity:	100 µL
Target:	KLHL12
Binding Specificity:	N-Term
Reactivity:	Human, Mouse, Rat, Cow, Dog, Horse, Rabbit, Guinea Pig, Zebrafish (Danio rerio), Pig, Bat, Monkey
Host:	Rabbit
Clonality:	Polyclonal
Conjugate:	This KLHL12 antibody is un-conjugated
Application:	Western Blotting (WB)

Product Details

Immunogen:	Synthetic peptide from N-Terminus of rat Klhl12 (Q8R2H4, NP_714952). Percent identity by BLAST analysis: Human, Chimpanzee, Gorilla, Gibbon, Monkey, Galago, Marmoset, Mouse, Rat, Elephant, Dog, Bovine, Bat, Rabbit, Horse, Pig, Guinea pig (100%), Opossum, Platypus (92%), Stickleback (90%), Lizard, Xenopus (85%), Zebrafish (84%). Type of Immunogen: Synthetic peptide
Specificity:	Rat KLHL12
Predicted Reactivity:	Percent identity by BLAST analysis: Human, Rat, Dog, Bovine, Rabbit, Horse, Pig (100%) Zebrafish (84%).
Purification:	Immunoaffinity purified

Target Details

Target:	KLHL12
Alternative Name:	KLHL12 (KLHL12 Products)
Background:	Name/Gene ID: KLHL12 Synonyms: KLHL12, C3IP1, DKIR, HDKIR, Kelch-like 12 (Drosophila), Kelch-like protein C3IP1, Kelch-like protein 12, CUL3-interacting protein 1, DKIR homolog
Gene ID:	59349
NCBI Accession:	NP_714952
UniProt:	Q53G59

Application Details

Application Notes:	Optimal working dilution should be determined by the investigator.
Comment:	Target Species of Antibody: Rat
Restrictions:	For Research Use only

Handling

Format:	Lyophilized
Reconstitution:	Distilled water
Concentration:	Lot specific
Buffer:	Lyophilized from PBS with 2 % sucrose
Handling Advice:	Avoid repeat freeze-thaw cycles.
Storage:	4 °C, -20 °C
Storage Comment:	Long term: -20°C, the use of 50% glycerol is recommended if storing aliquots in -20°C for long term use (up to 1 year) Short term (less than 1 week): 4°C. Avoid freeze-thaw cycles.

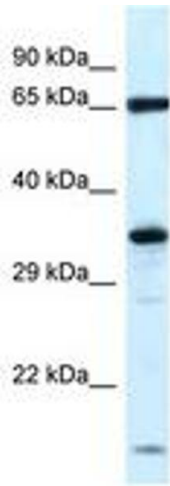


Image 1.