



[Go to Product page](#)

Datasheet for ABIN6747440

## anti-Cathepsin E antibody (AA 183-232)

### 1 Image

#### Overview

Quantity:	100 µL
Target:	Cathepsin E (CTSE)
Binding Specificity:	AA 183-232
Reactivity:	Human, Dog
Host:	Rabbit
Clonality:	Polyclonal
Conjugate:	This Cathepsin E antibody is un-conjugated
Application:	Western Blotting (WB)

#### Product Details

Immunogen:	Synthetic peptide located between aa183-232 of human CTSE (P14091, NP_683865). Percent identity by BLAST analysis: Human, Chimpanzee, Gorilla, Gibbon, Marmoset (100%), Monkey, Panda, Bat, Rabbit, Horse (92%), Dog (85%).  Type of Immunogen: Synthetic peptide
Specificity:	Human CTSE / Cathepsin E
Predicted Reactivity:	Percent identity by BLAST analysis: Human (100%) Horse (92%) Dog (85%).
Purification:	Immunoaffinity purified

#### Target Details

Target:	Cathepsin E (CTSE)
---------	--------------------

## Target Details

---

Alternative Name: CTSE / Cathepsin E ([CTSE Products](#))

---

Background: Name/Gene ID: CTSE  
Subfamily: Aspartic A1  
Family: Protease

Synonyms: CTSE, CATE, Cathepsin E, Ctsea, Slow-moving proteinase, CEB

---

Gene ID: 1510

---

NCBI Accession: [NP\\_683865](#)

---

UniProt: [P14091](#)

---

## Application Details

---

Application Notes: Optimal working dilution should be determined by the investigator.

---

Comment: Target Species of Antibody: Human

---

Restrictions: For Research Use only

---

## Handling

---

Format: Lyophilized

---

Reconstitution: Distilled water

---

Concentration: Lot specific

---

Buffer: Lyophilized from PBS with 2 % sucrose

---

Handling Advice: Avoid repeat freeze-thaw cycles.

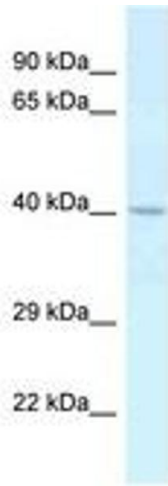
---

Storage: 4 °C, -20 °C

---

Storage Comment: Long term: -20°C, the use of 50% glycerol is recommended if storing aliquots in -20°C for long term use (up to 1 year)

Short term (less than 1 week): 4°C. Avoid freeze-thaw cycles.



**Image 1.**