

Datasheet for ABIN6747450
anti-CAMK4 antibody (AA 322-371)



[Go to Product page](#)

1 Image

Overview

Quantity:	100 µL
Target:	CAMK4
Binding Specificity:	AA 322-371
Reactivity:	Human, Horse
Host:	Rabbit
Clonality:	Polyclonal
Conjugate:	This CAMK4 antibody is un-conjugated
Application:	Western Blotting (WB)

Product Details

Immunogen:	Synthetic peptide located between aa322-371 of human CAMK4 (Q16566, NP_001735). Percent identity by BLAST analysis: Human, Chimpanzee, Gorilla, Monkey (100%), Gibbon, Marmoset (92%), Galago, Elephant (85%). Type of Immunogen: Synthetic peptide
Specificity:	Human CAMK4
Predicted Reactivity:	Percent identity by BLAST analysis:
Purification:	Immunoaffinity purified

Target Details

Target:	CAMK4
---------	-------

Target Details

Alternative Name:	CAMK4 (CAMK4 Products)
Background:	Name/Gene ID: CAMK4 Subfamily: CAMK1 Family: Protein Kinase Synonyms: CAMK4, CAM kinase IV, CaMK IV, CaMK-GR, CAMKIV, CaMK, CAM kinase- GR, CaM kinase-GR, CaM-KIV
Gene ID:	814
NCBI Accession:	NP_001735
UniProt:	Q16566
Pathways:	EGFR Signaling Pathway , Neurotrophin Signaling Pathway , Production of Molecular Mediator of Immune Response , G-protein mediated Events , Interaction of EGFR with phospholipase C-gamma

Application Details

Application Notes:	Optimal working dilution should be determined by the investigator.
Comment:	Target Species of Antibody: Human
Restrictions:	For Research Use only

Handling

Format:	Lyophilized
Reconstitution:	Distilled water
Concentration:	Lot specific
Buffer:	Lyophilized from PBS with 2 % sucrose
Handling Advice:	Avoid repeat freeze-thaw cycles.
Storage:	4 °C,-20 °C
Storage Comment:	Long term: -20°C, the use of 50% glycerol is recommended if storing aliquots in -20°C for long term use (up to 1 year) Short term (less than 1 week): 4°C. Avoid freeze-thaw cycles.

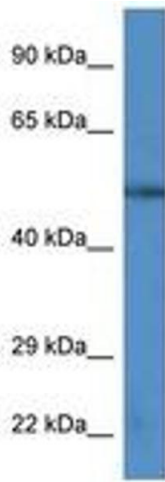


Image 1.